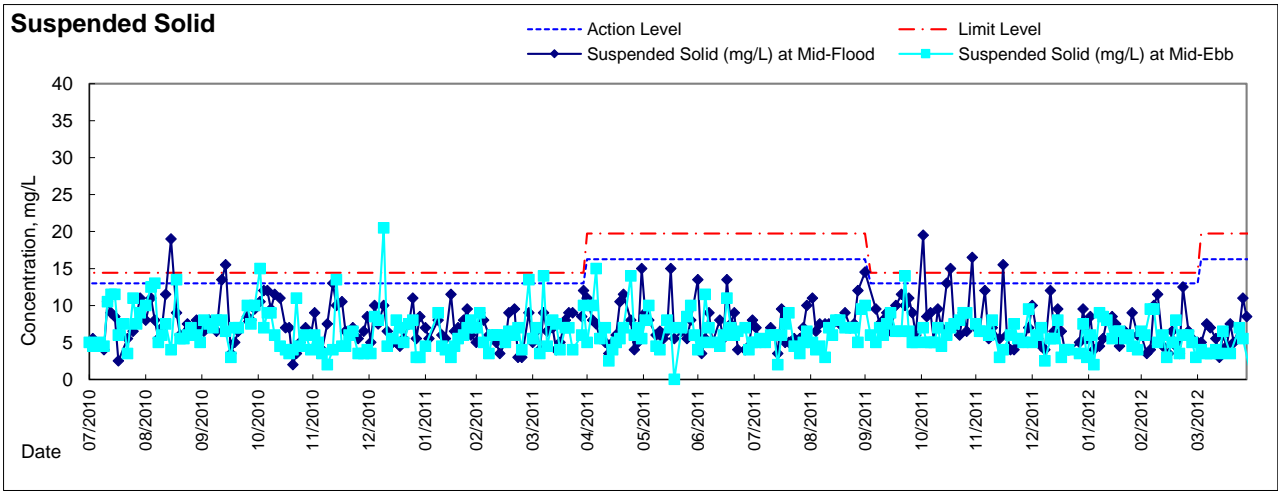
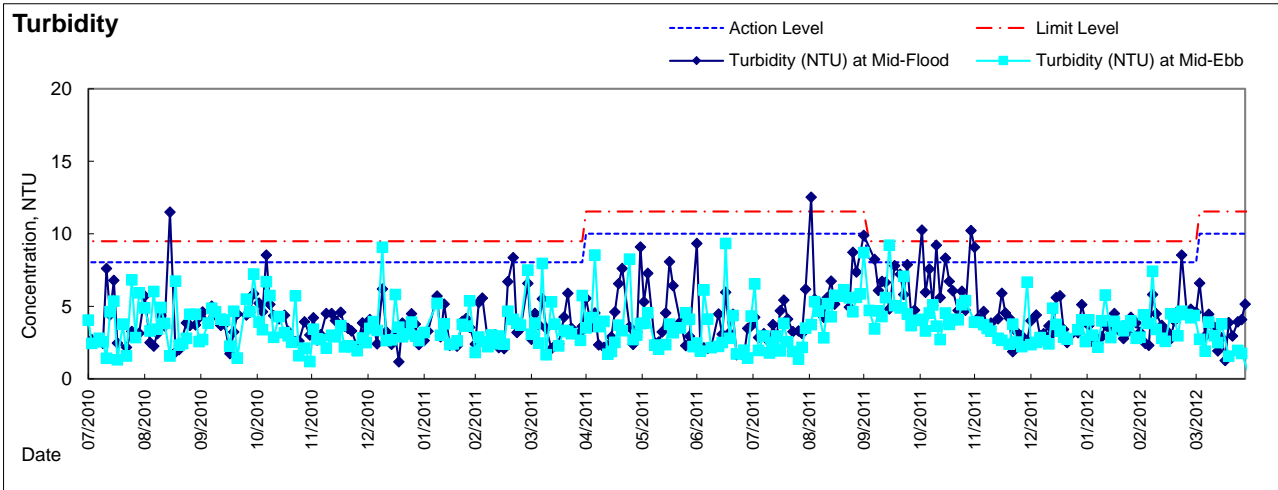
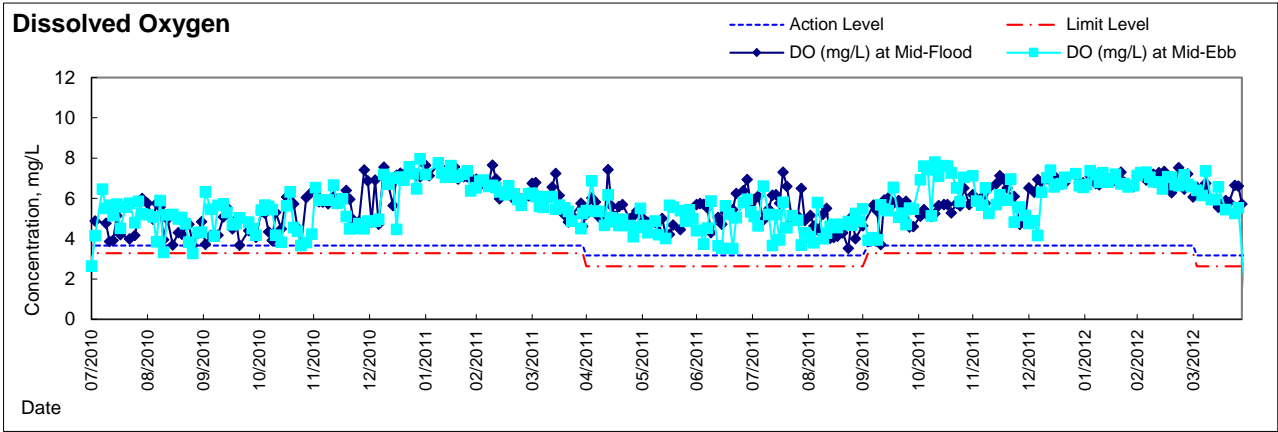


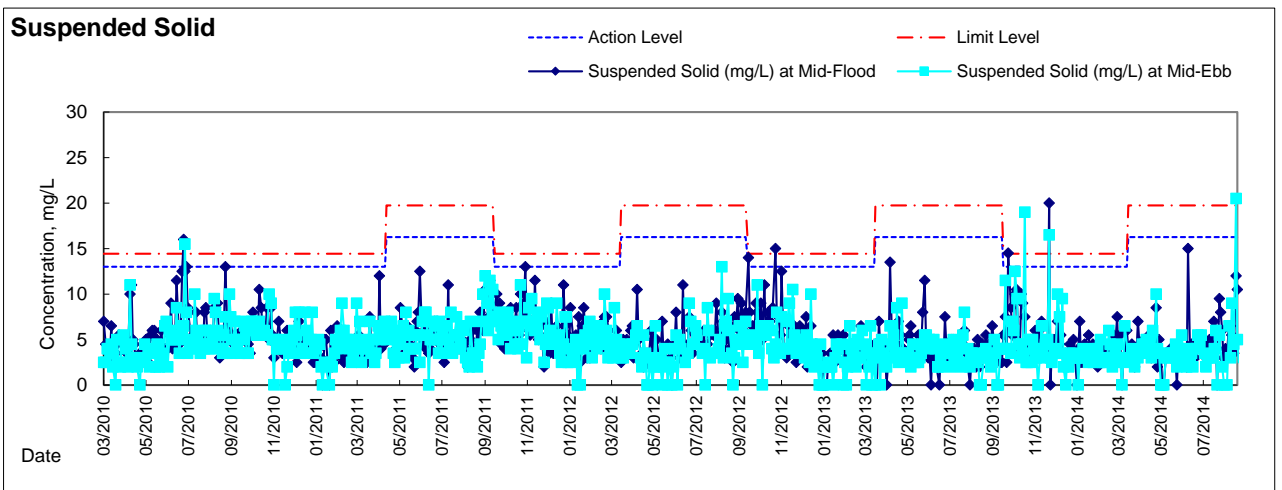
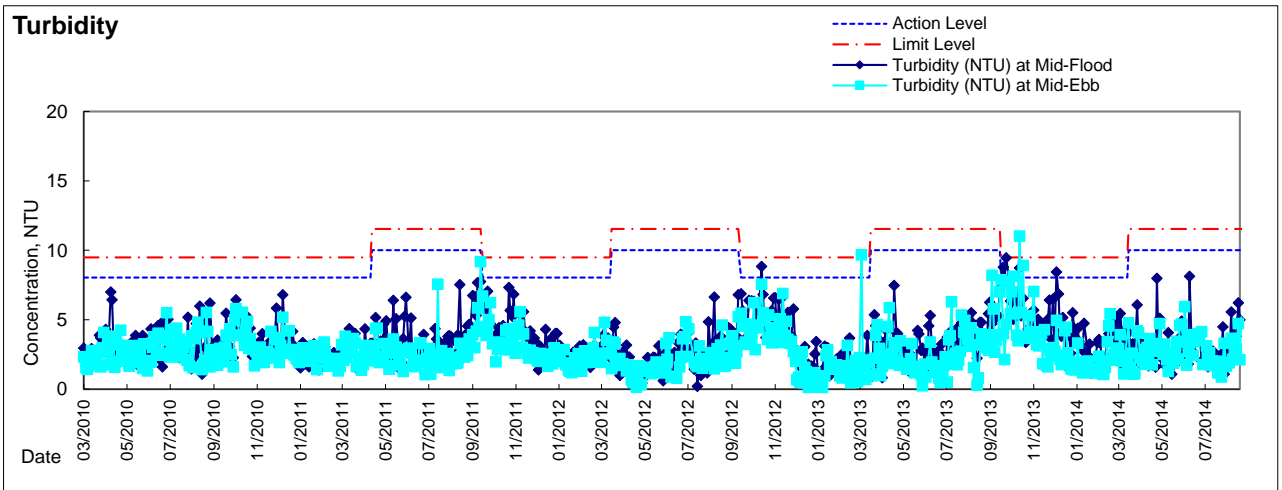
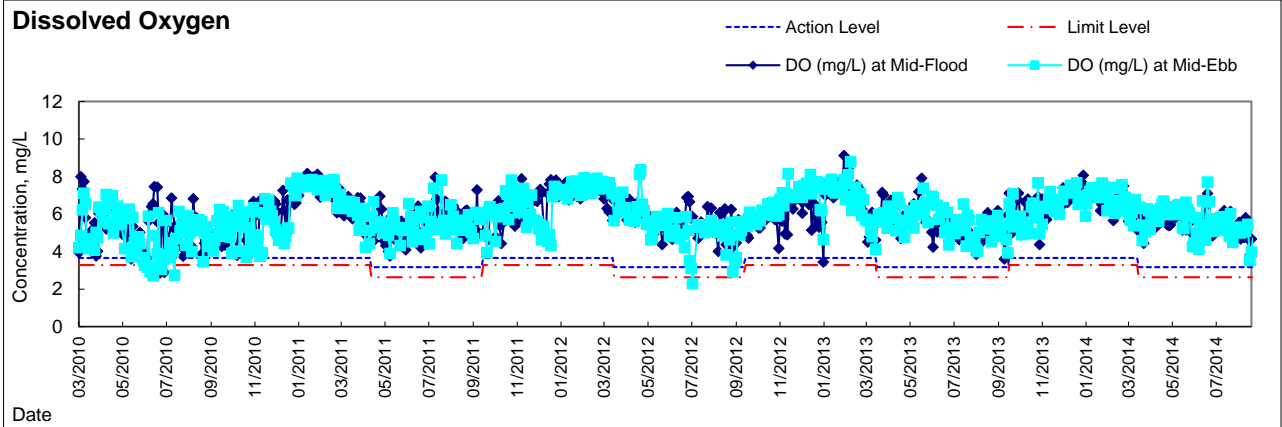


Graphic Presentation of Water Quality Result of WSD7 - Kowloon South





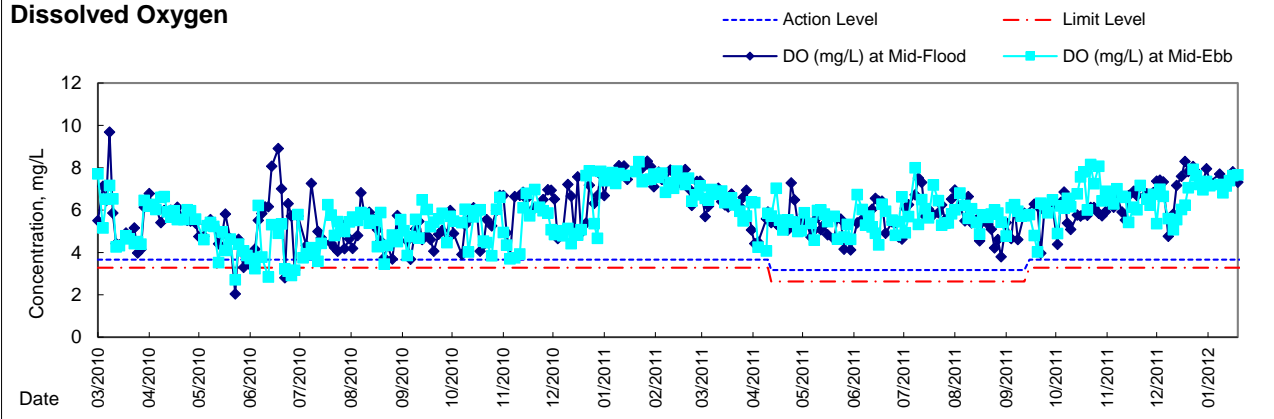
Graphic Presentation of Water Quality Result of WSD9 - Tai Wan



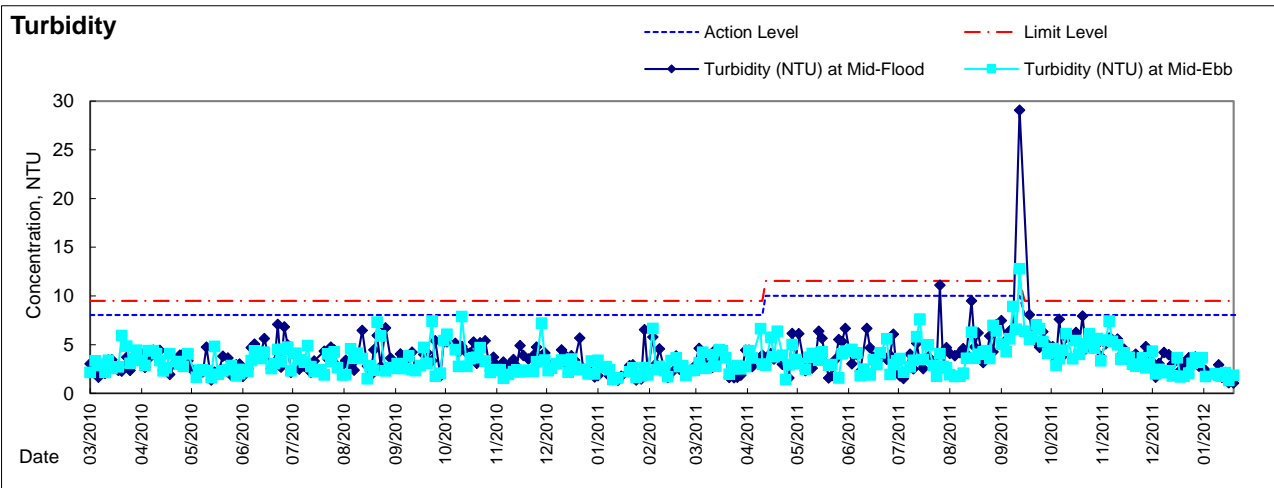


Graphic Presentation of Water Quality Result of WSD10 - Cha Kwo Ling

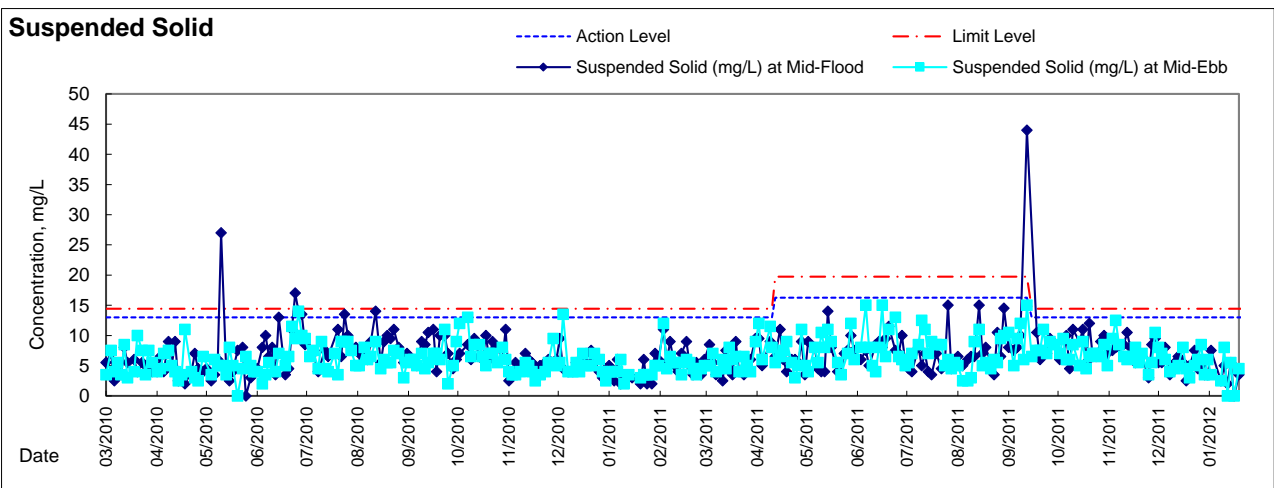
Dissolved Oxygen



Turbidity

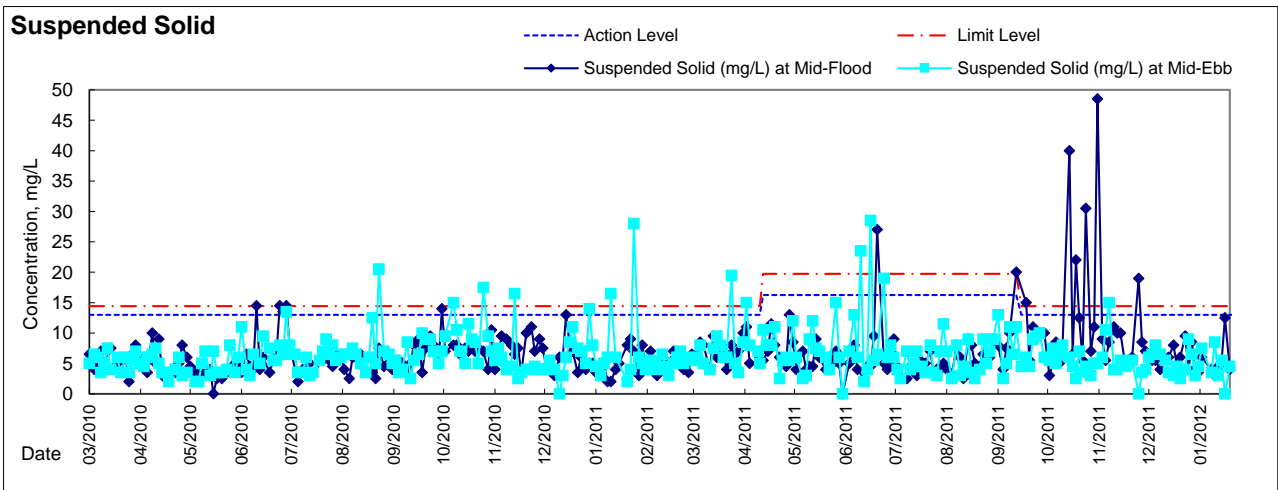
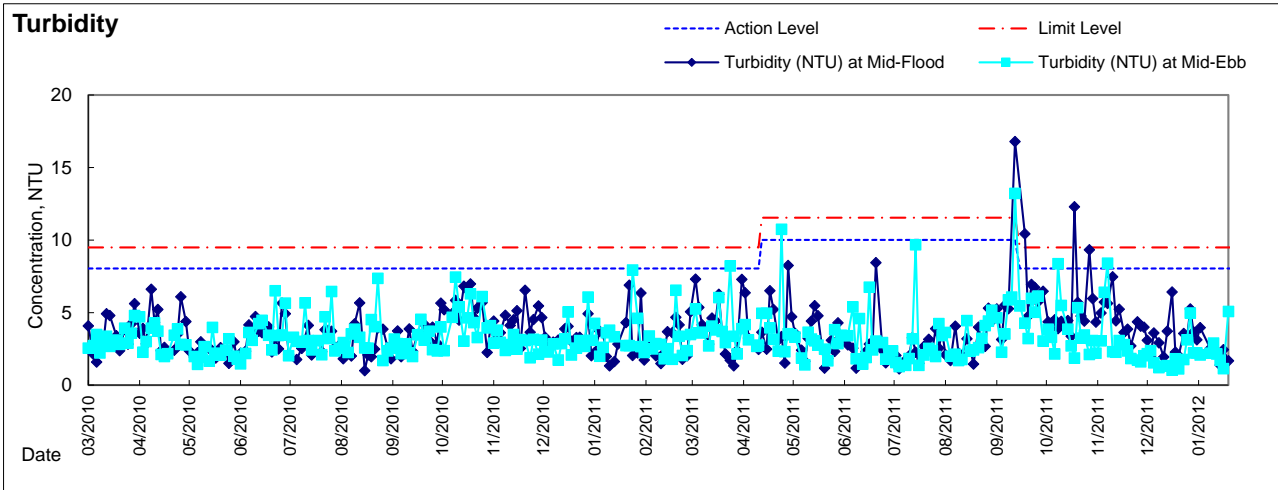
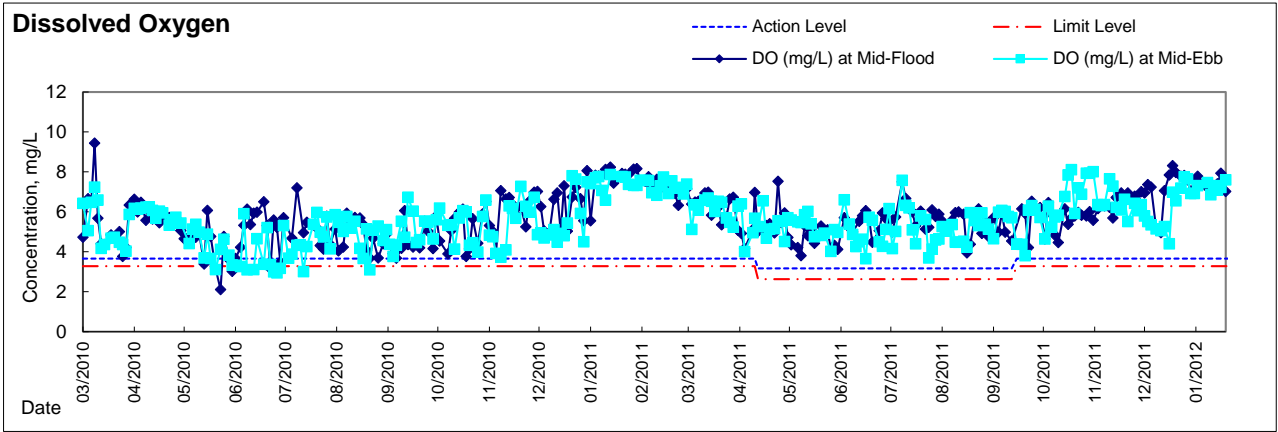


Suspended Solid



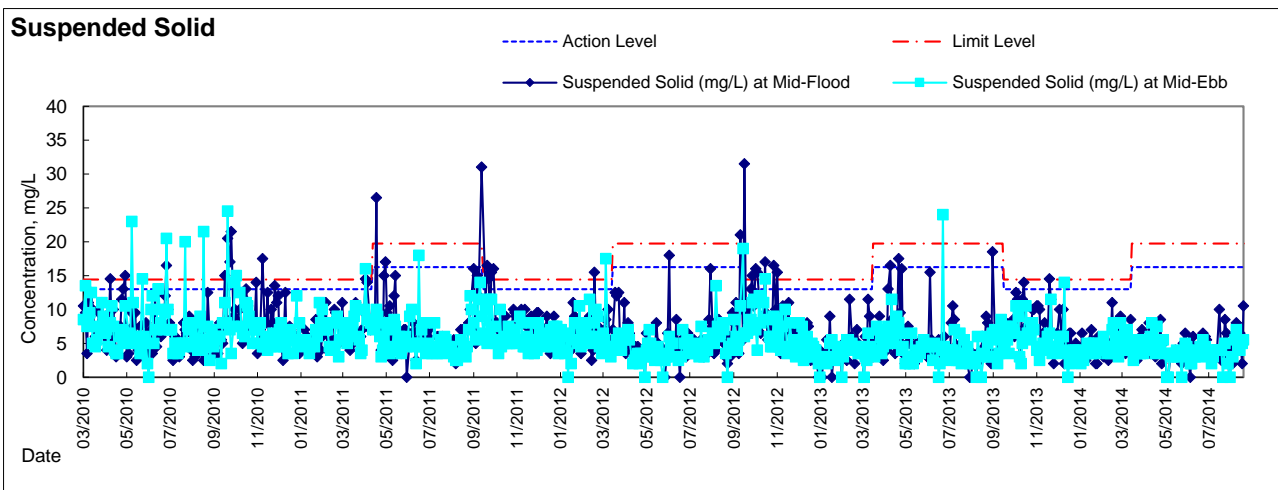
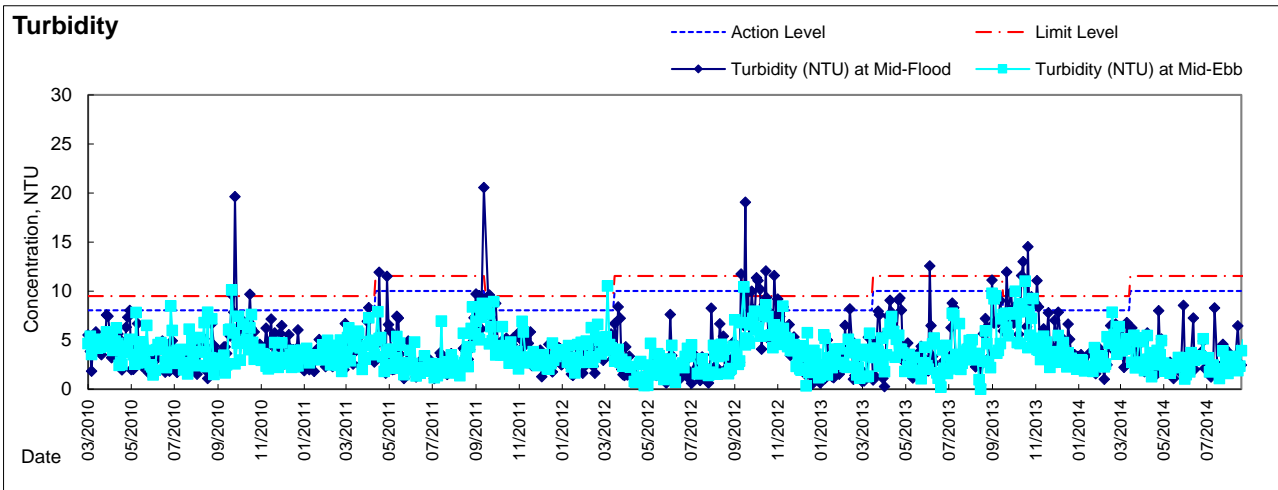
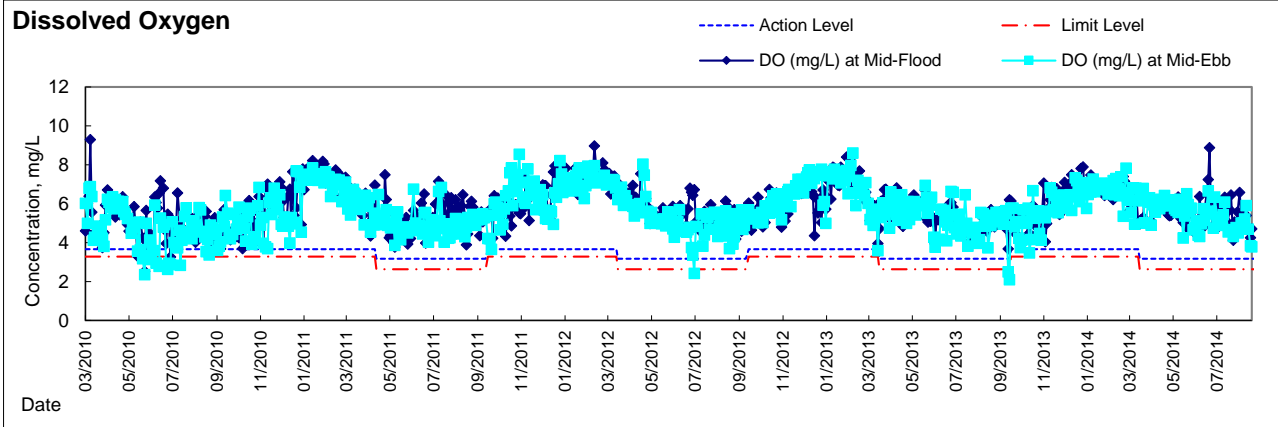


Graphic Presentation of Water Quality Result of WSD15 - Sai Wan Ho



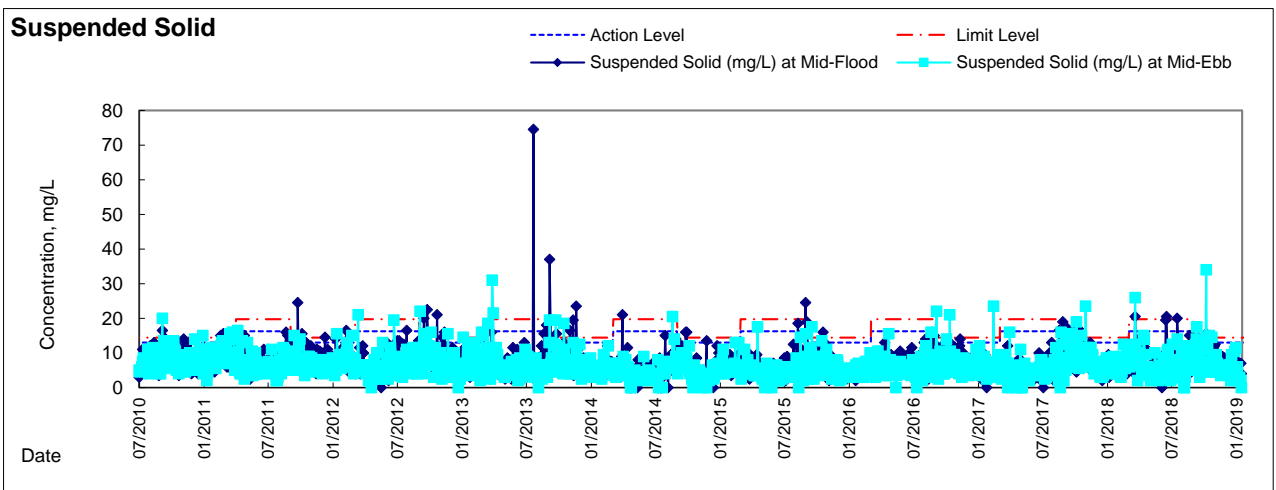
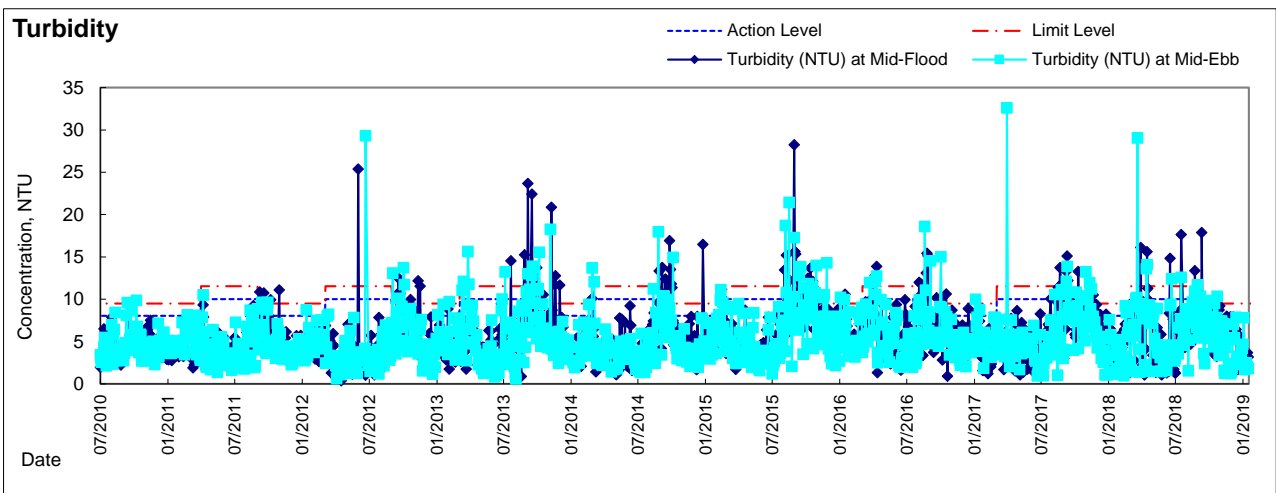
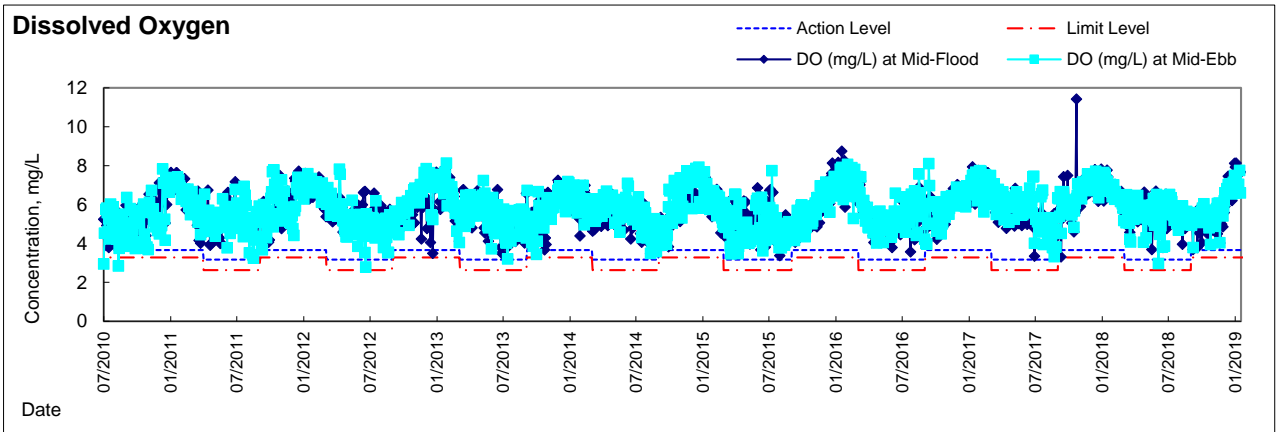


Graphic Presentation of Water Quality Result of WSD17 - Quarry Bay



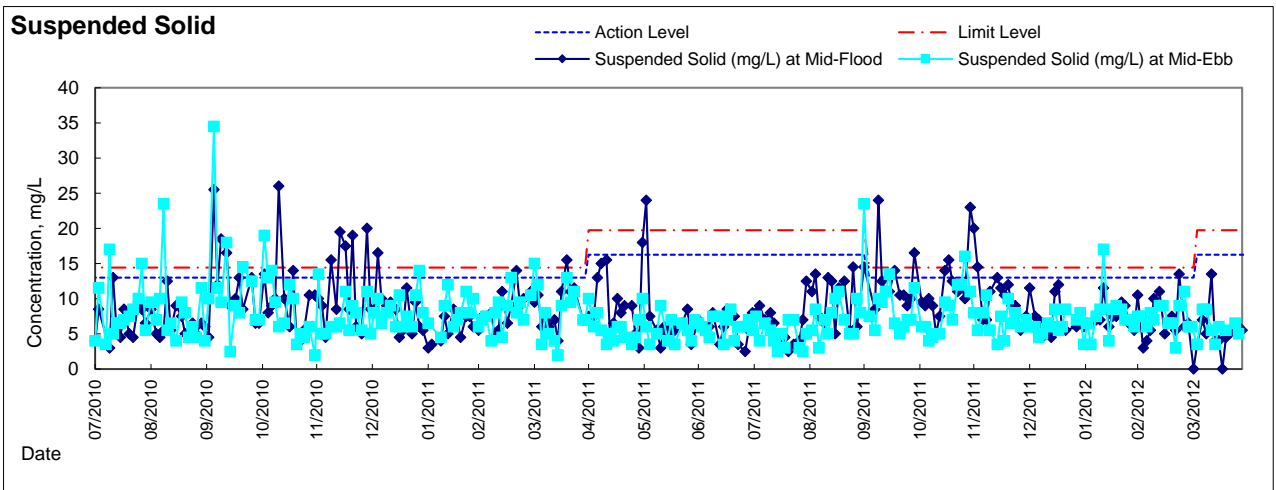
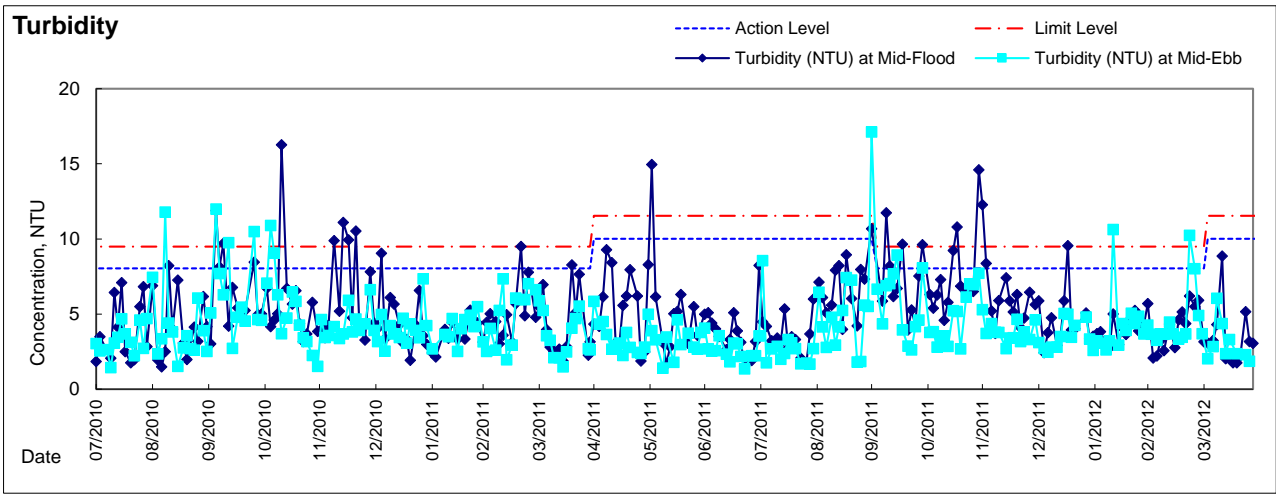
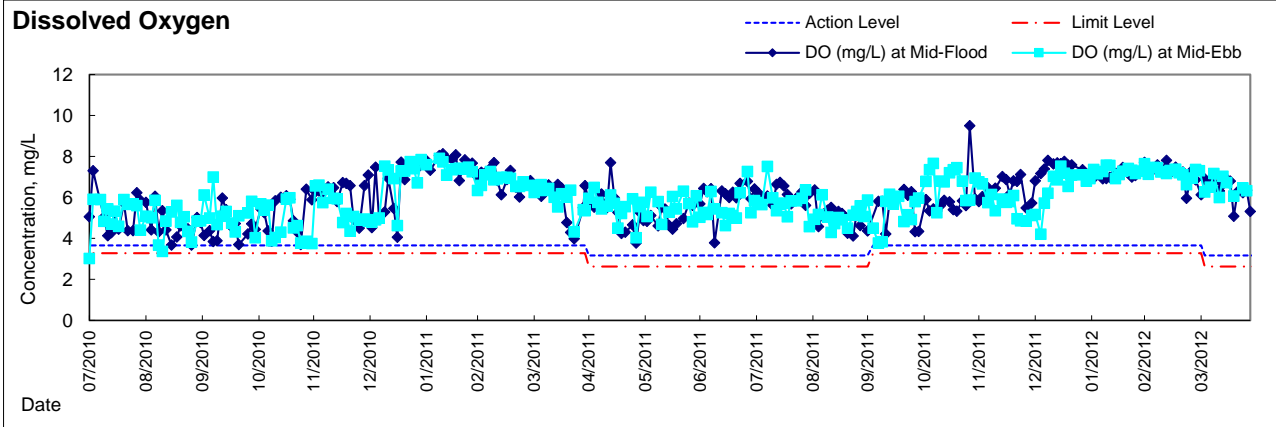


Graphic Presentation of Water Quality Result of WSD19 - Sheung Wan



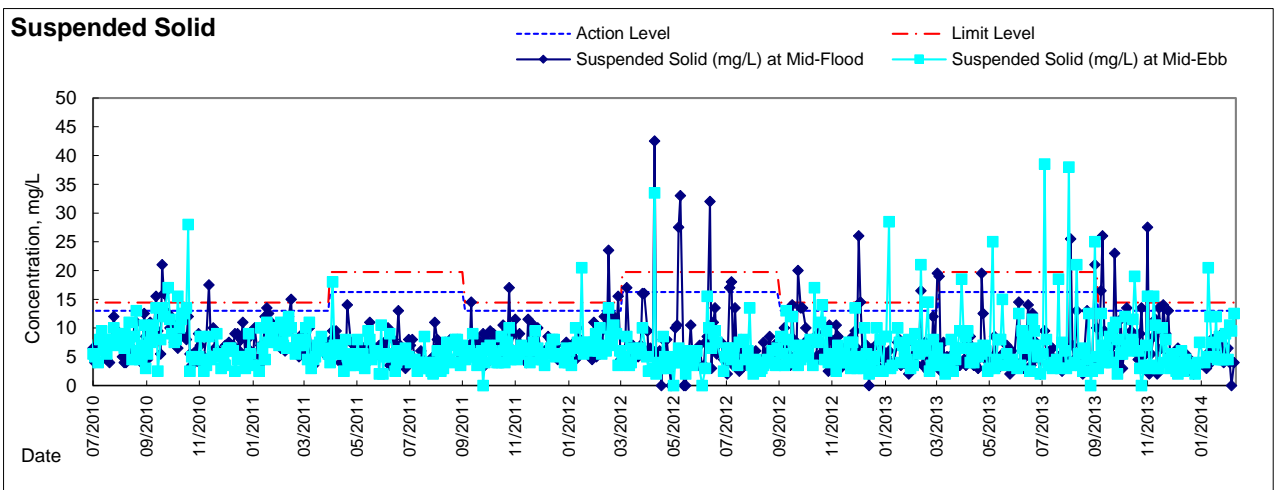
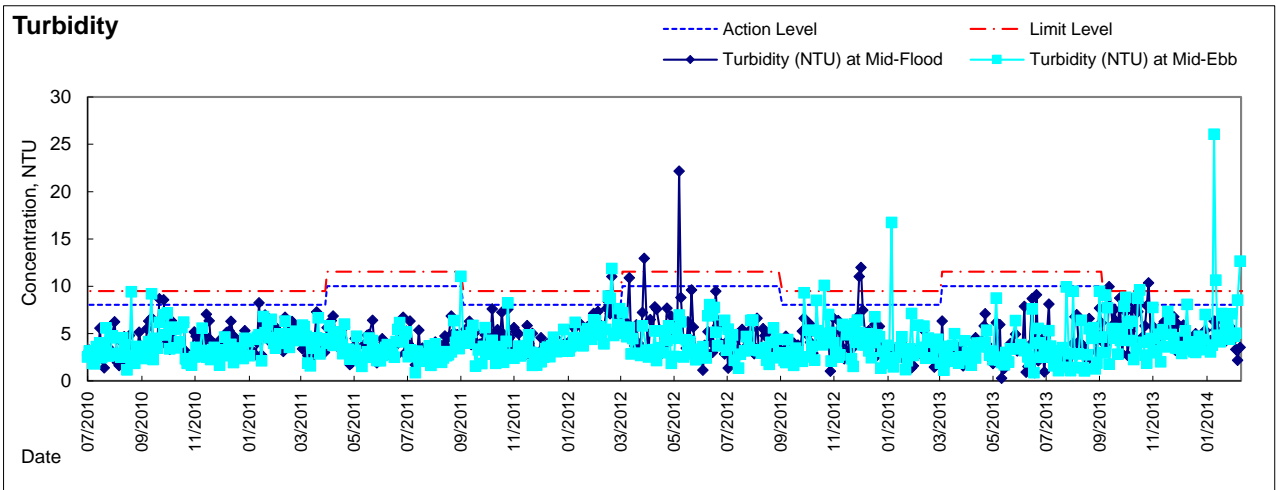
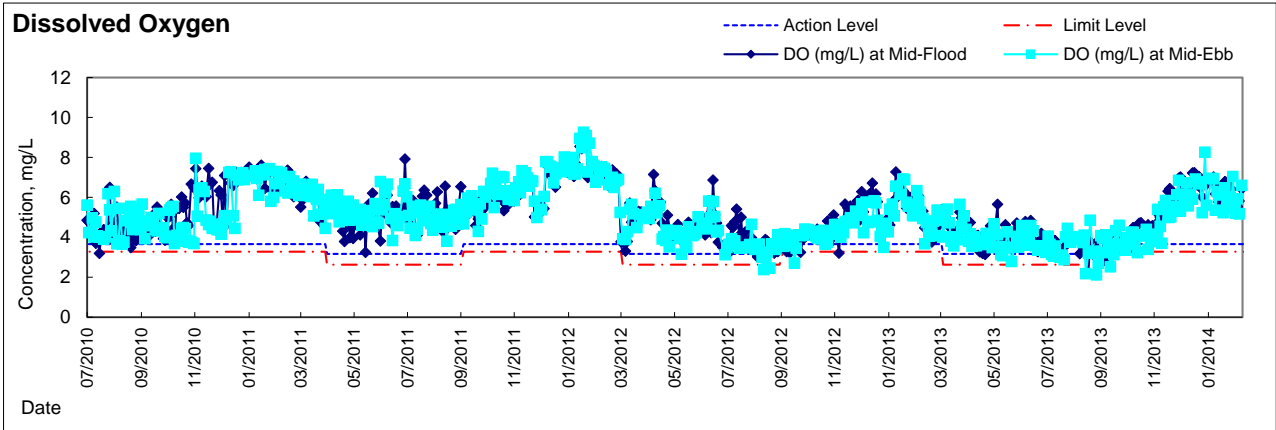


Graphic Presentation of Water Quality Result of WSD20 - Kennedy Town



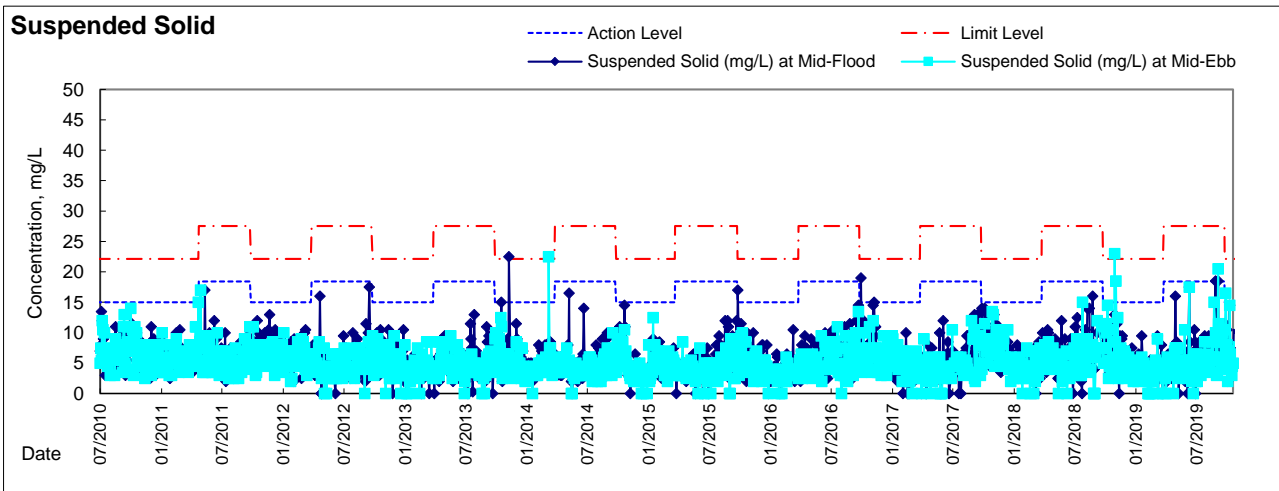
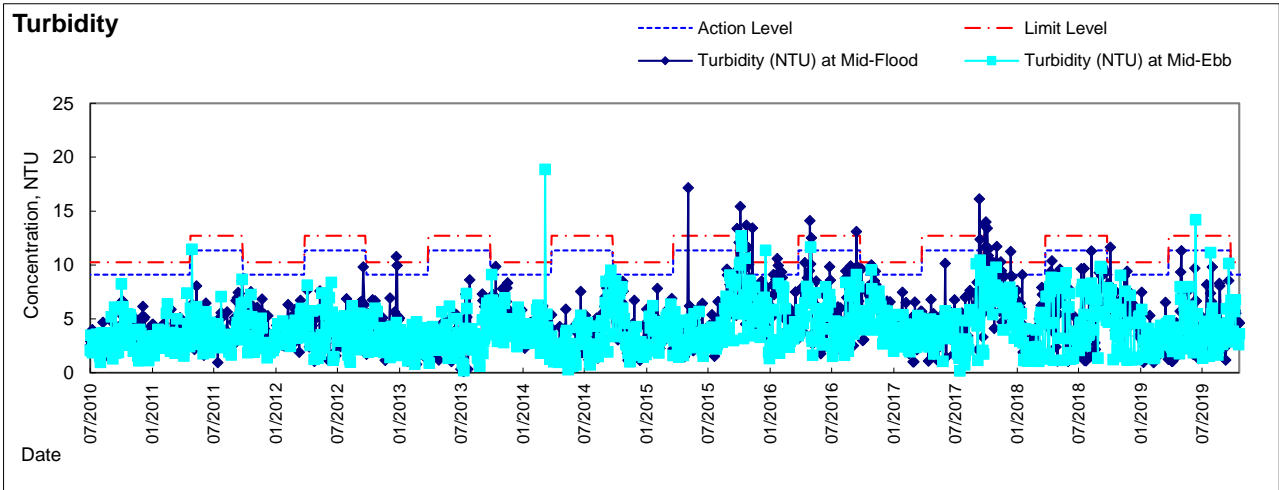
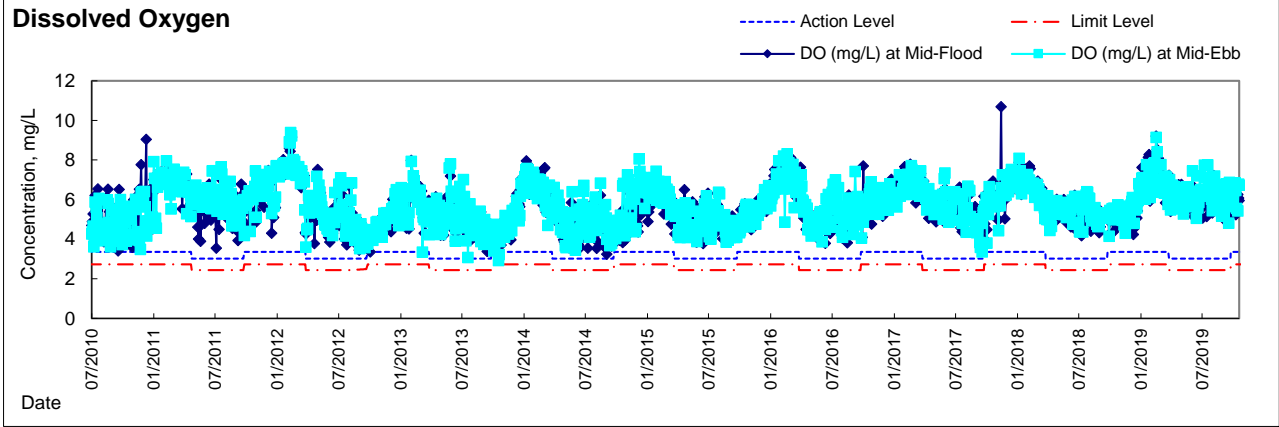


Graphic Presentation of Water Quality Result of WSD21 - Wan Chai



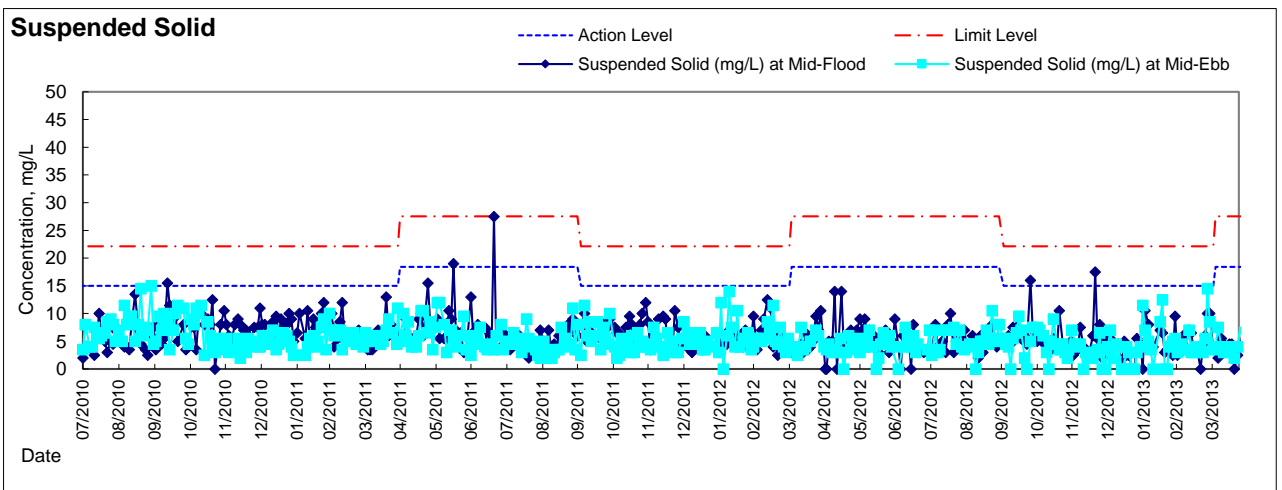
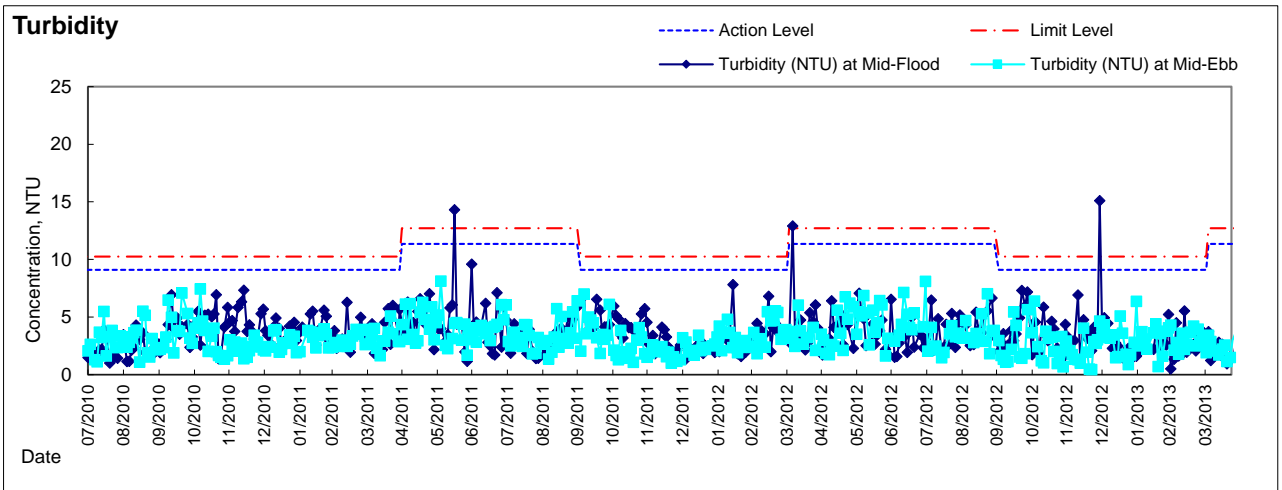
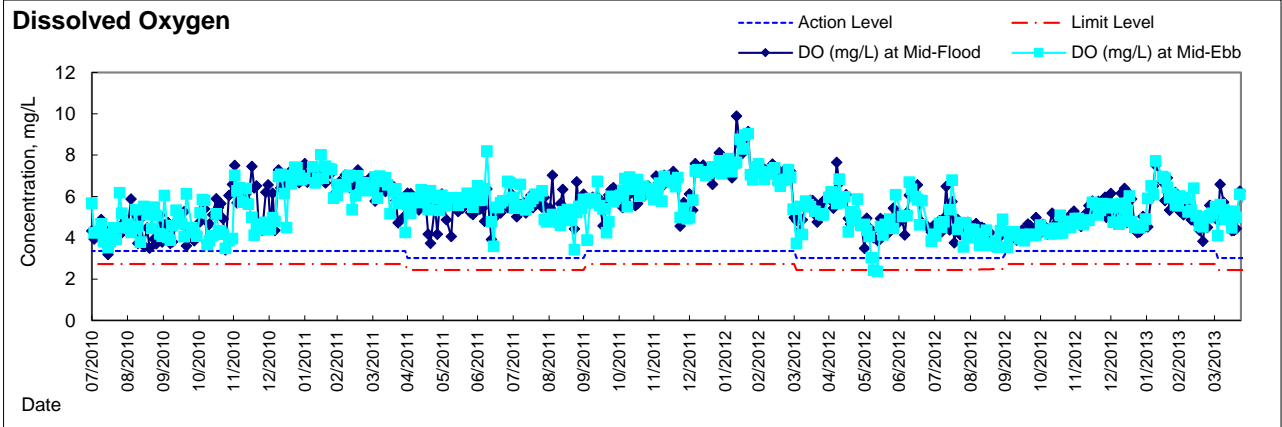


Graphic Presentation of Water Quality Result of C1 - HKCEC Extension



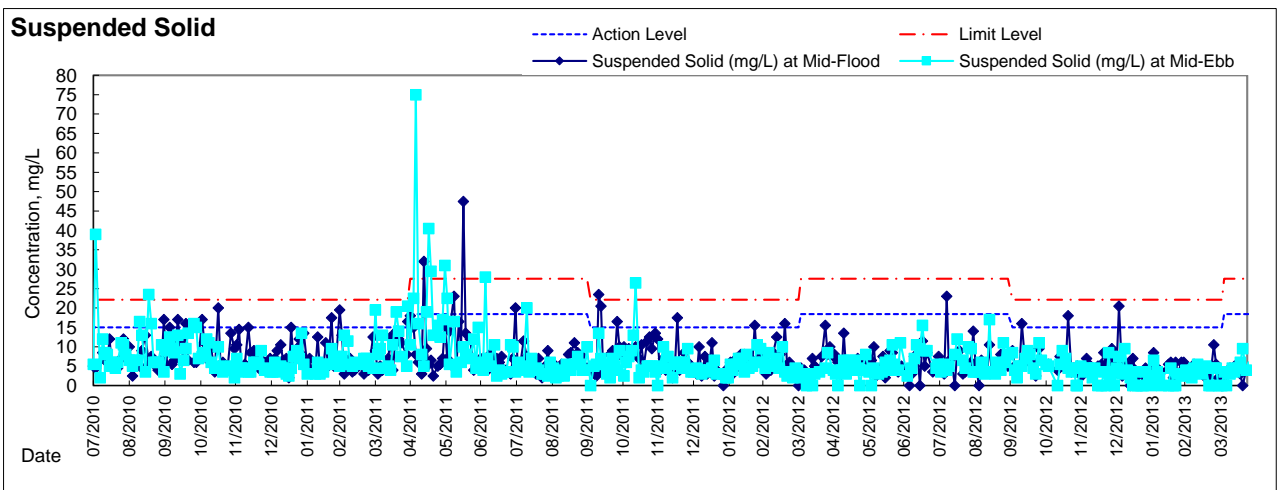
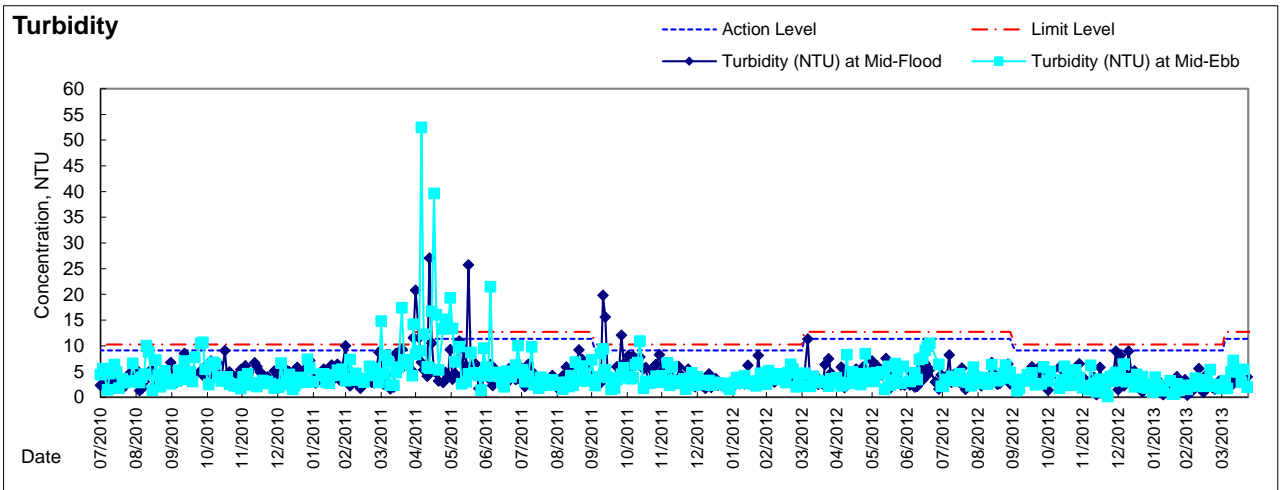
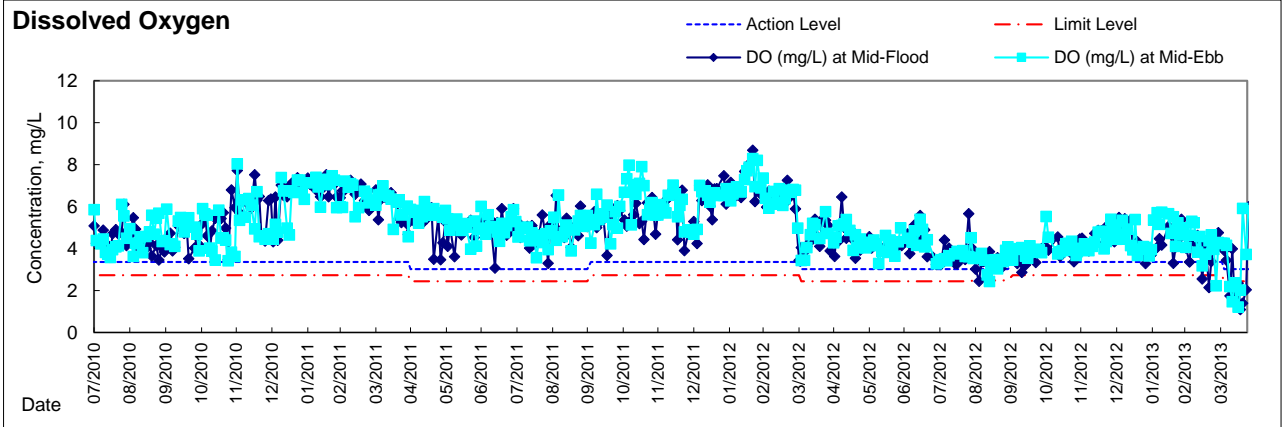


Graphic Presentation of Water Quality Result of C2 - TH / APA / SOC



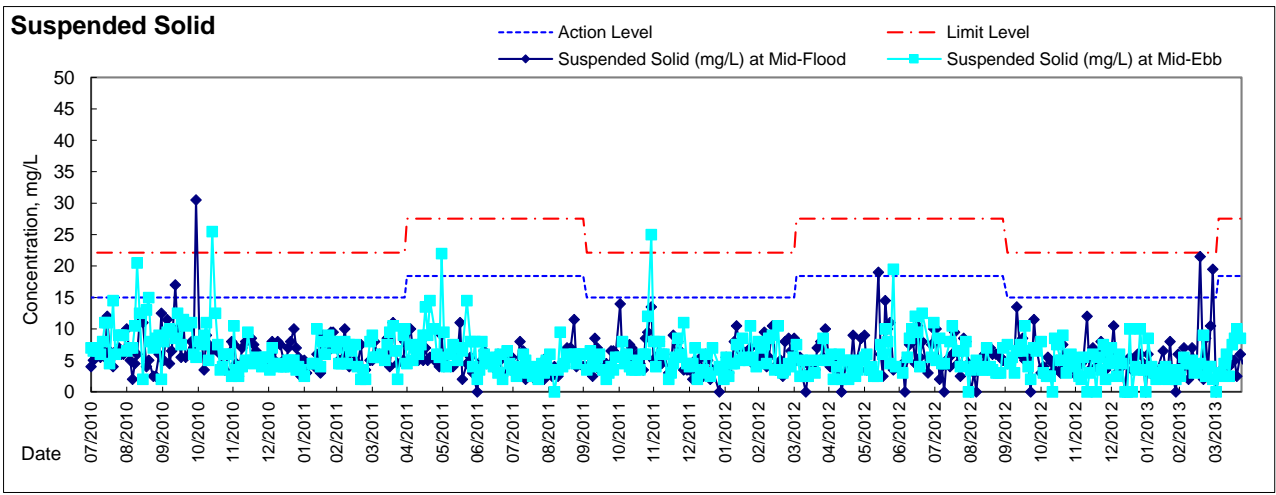
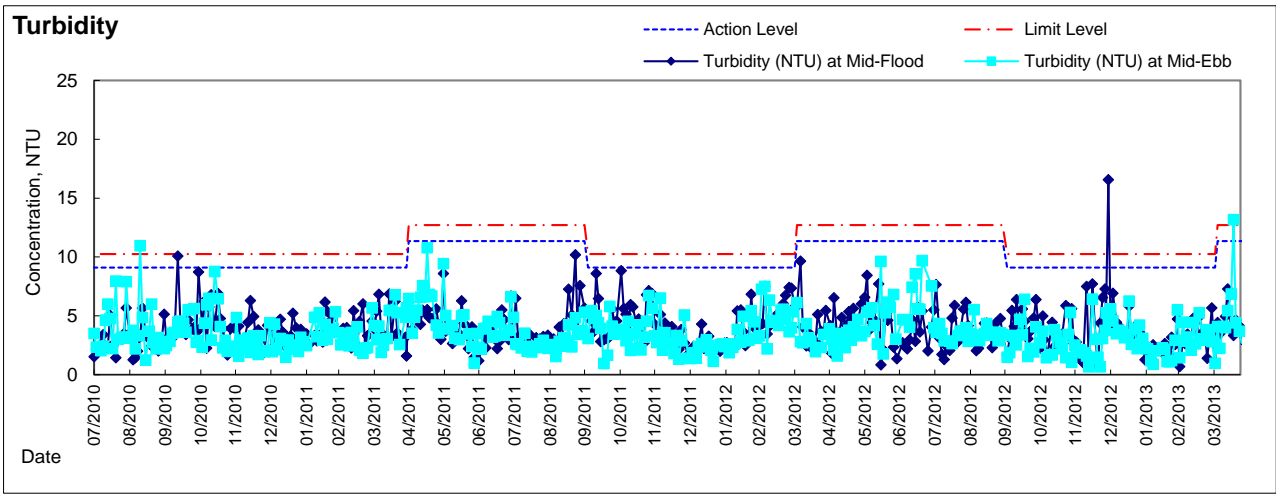
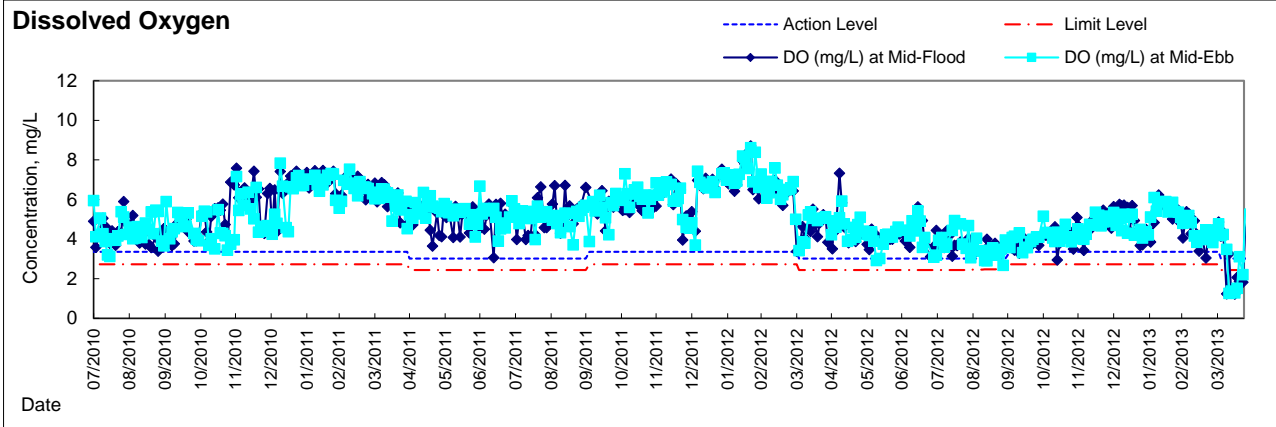


Graphic Presentation of Water Quality Result of C3 - HKCEC Phase I



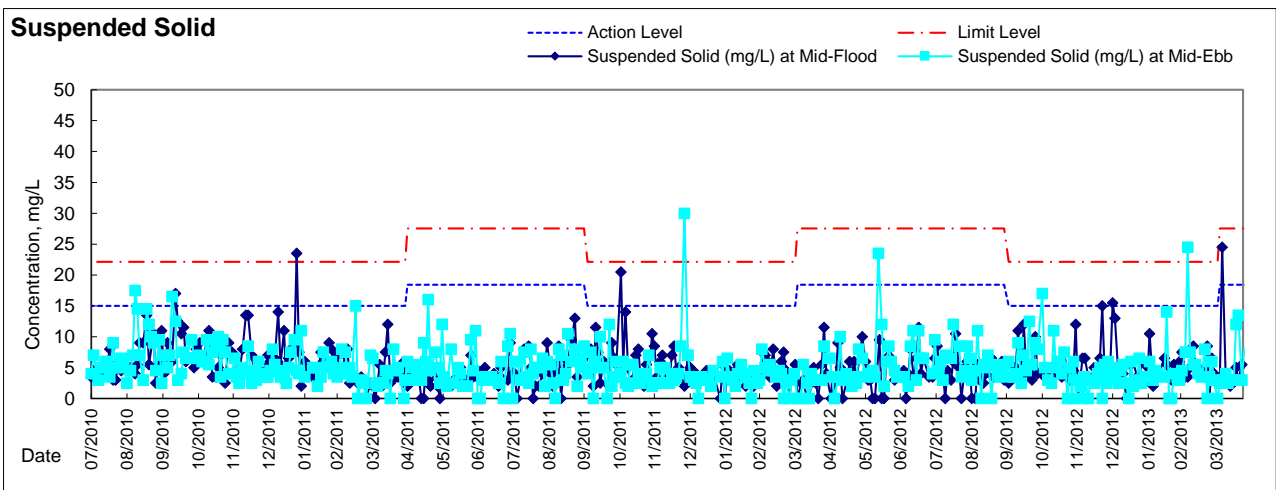
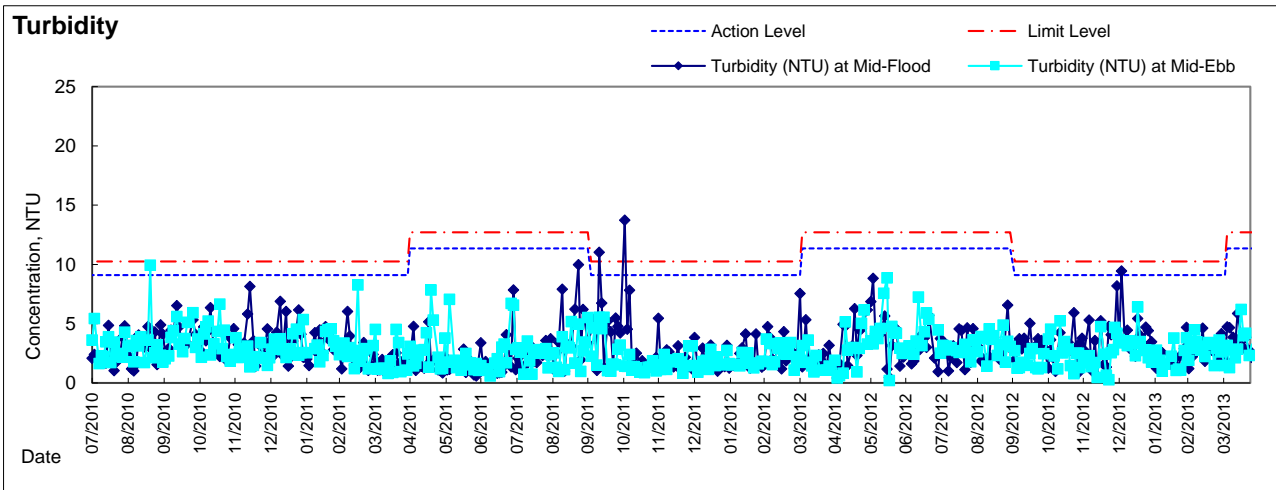
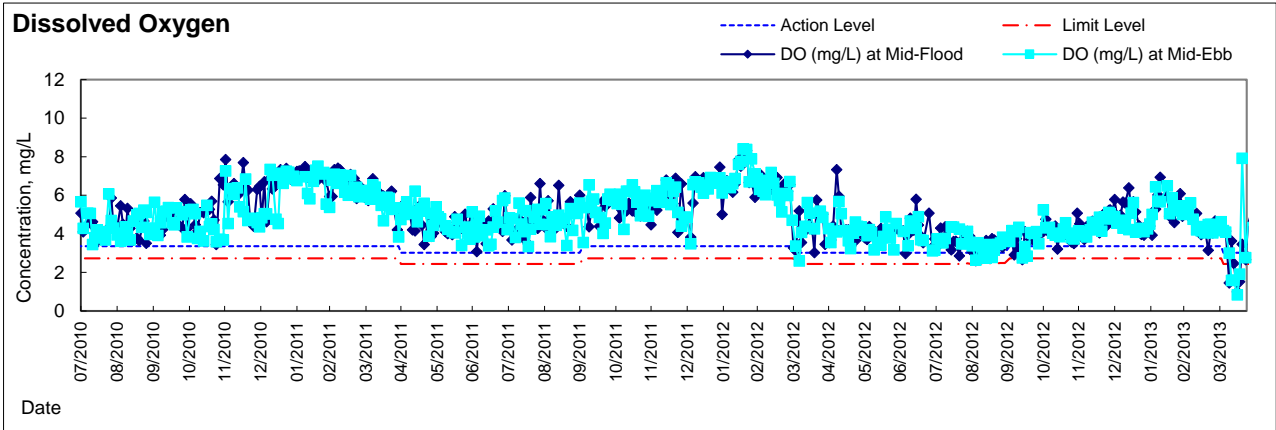


Graphic Presentation of Water Quality Result of C4e - WCT / GEC



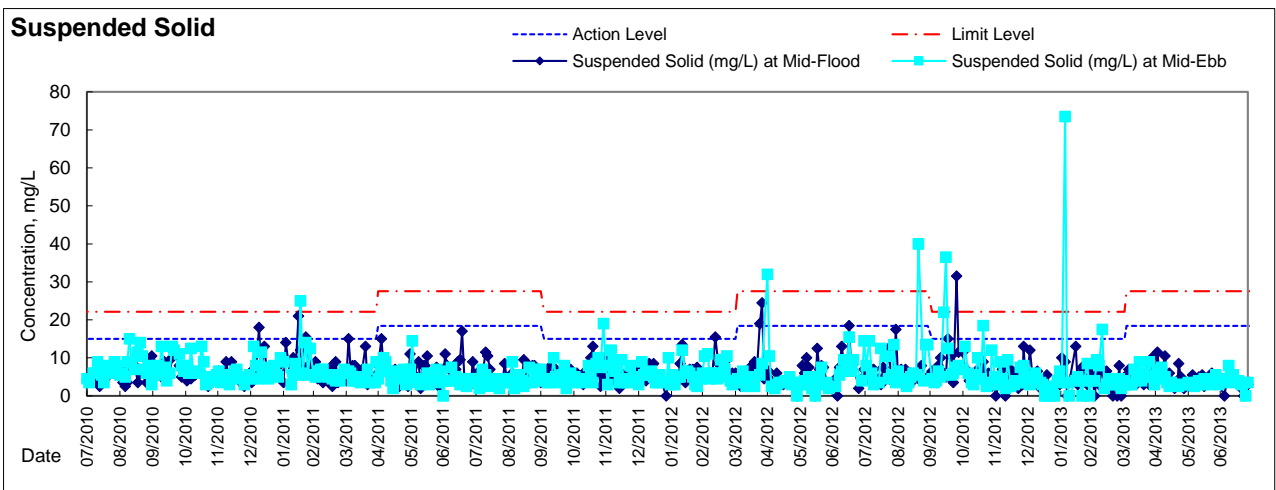
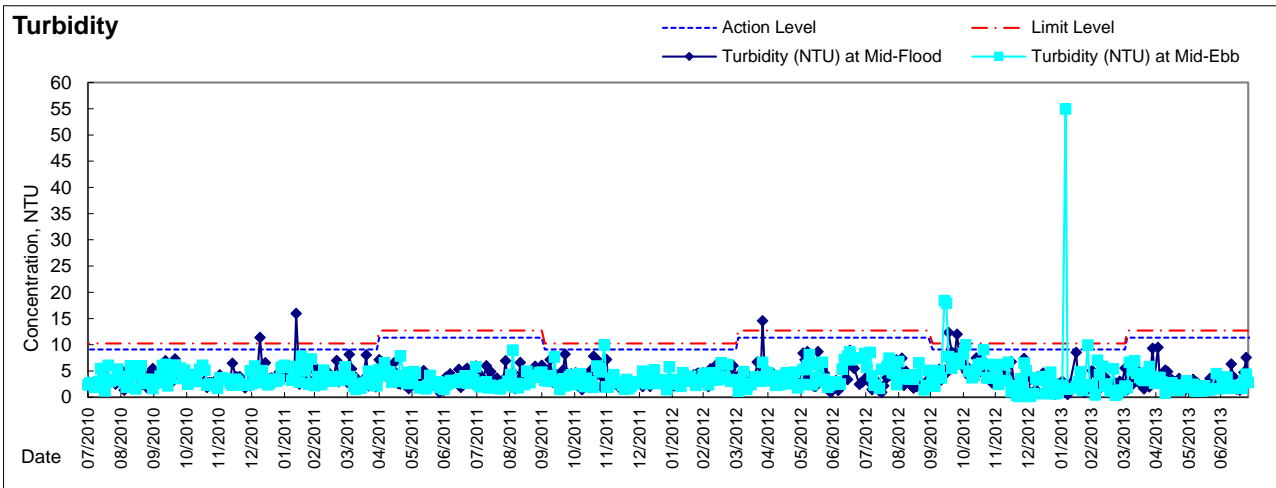
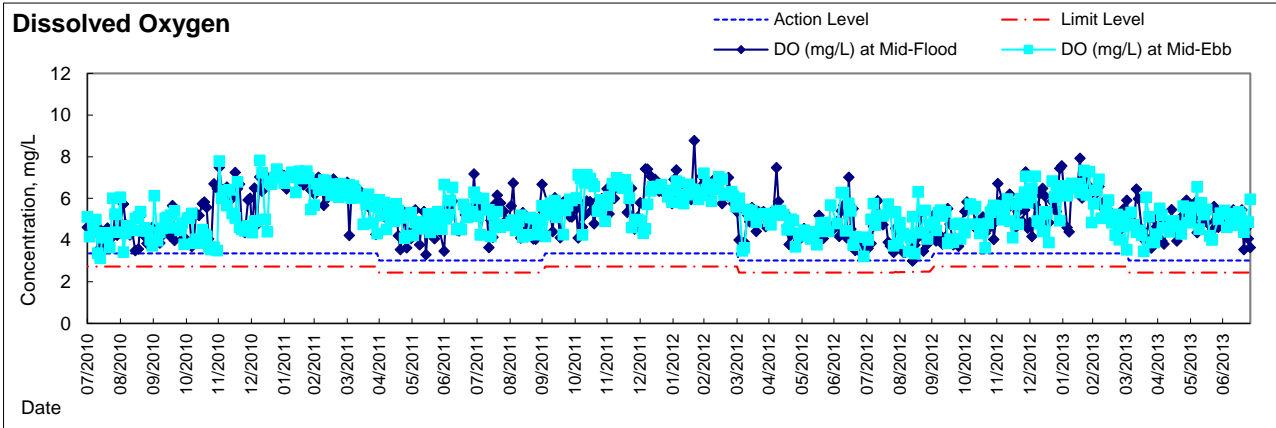


Graphic Presentation of Water Quality Result of C4w - WCT / GEC



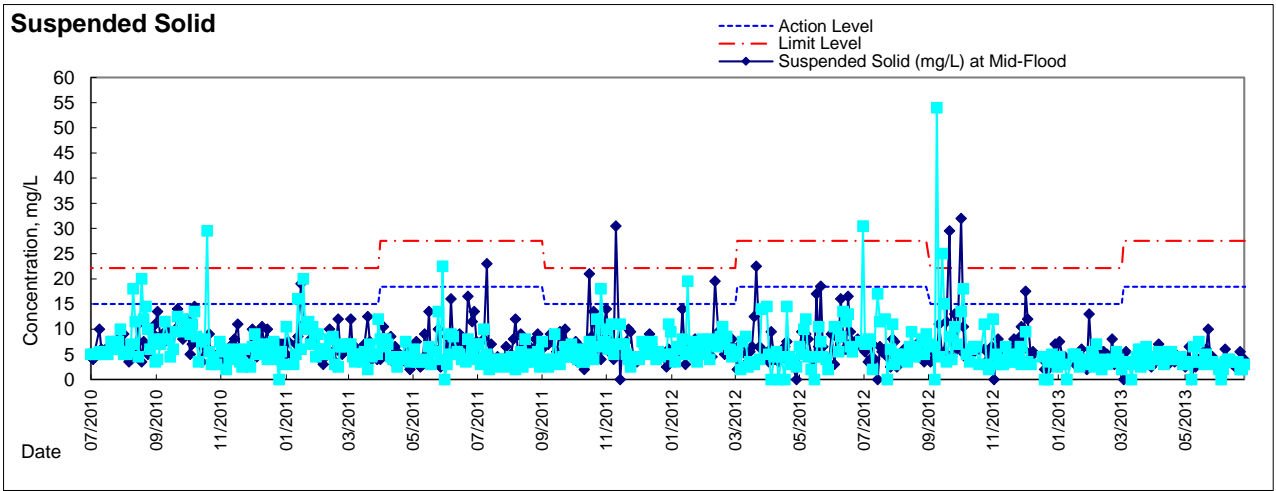
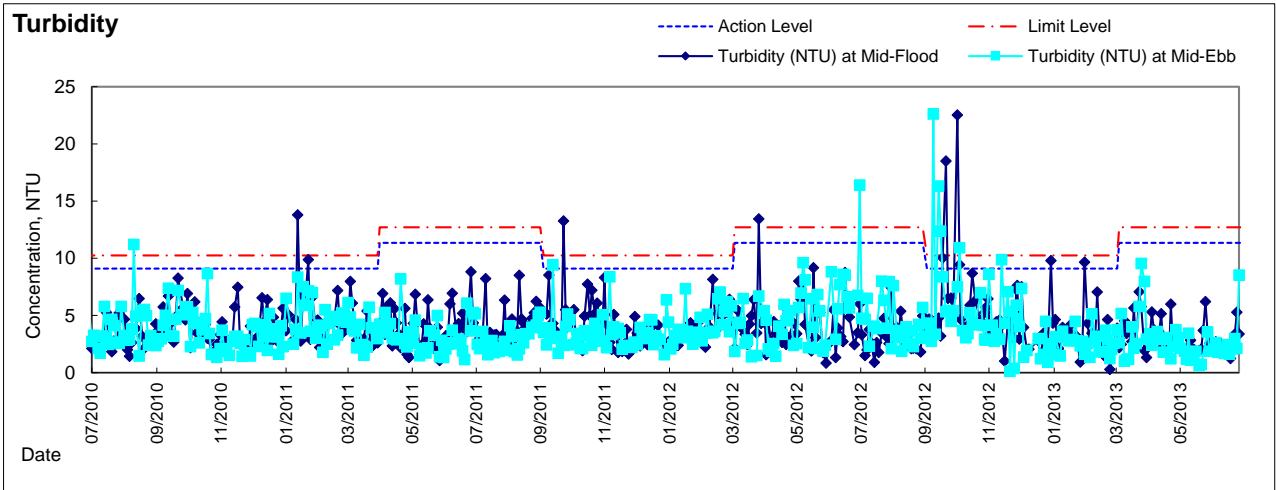
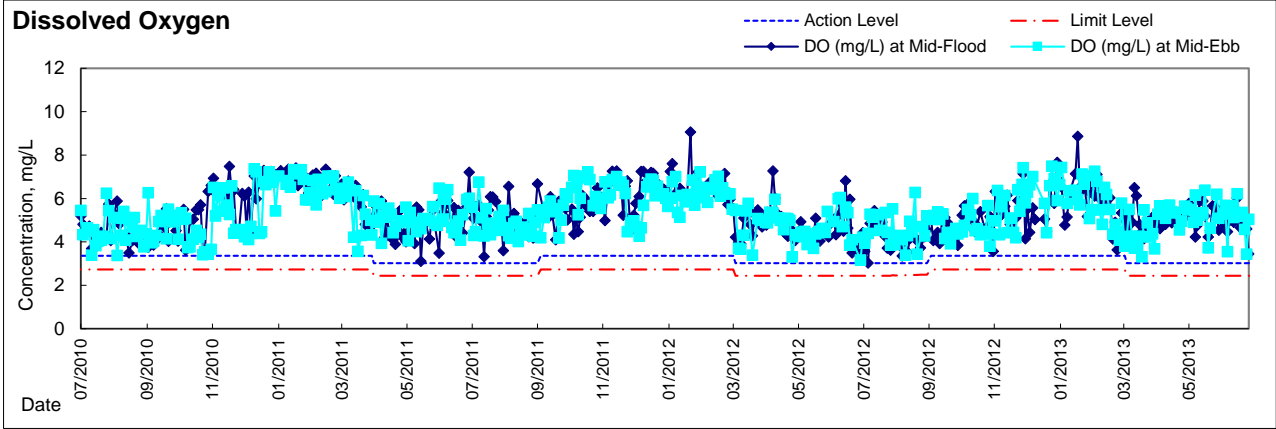


Graphic Presentation of Water Quality Result of C5e - Sun Hung Kai Centre



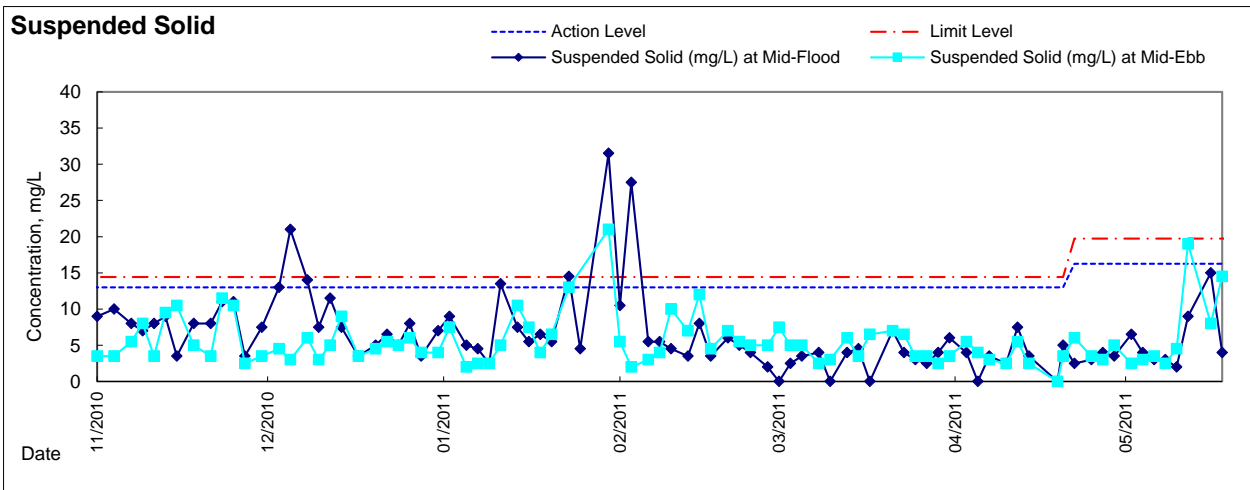
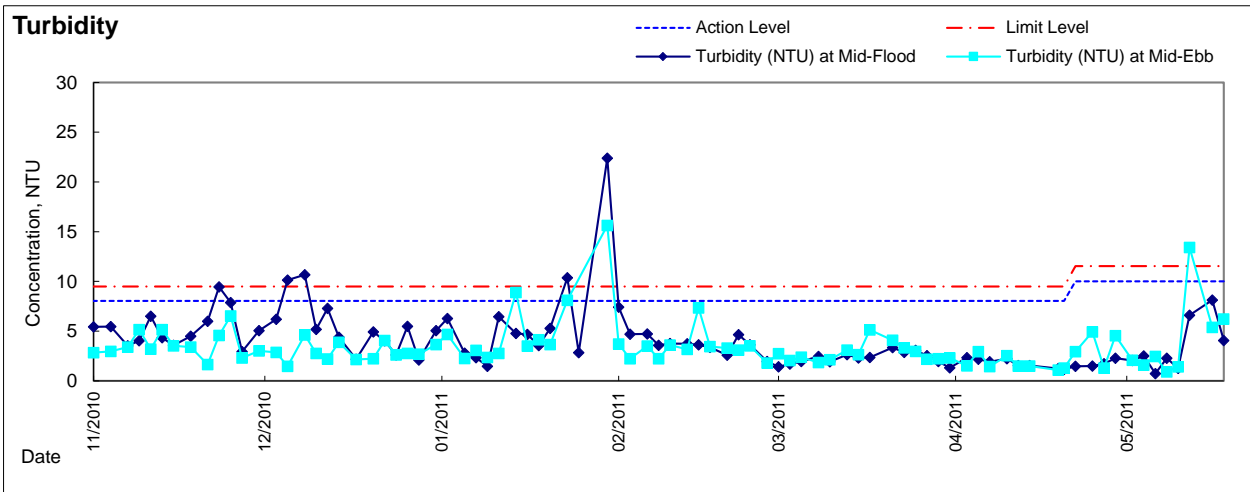
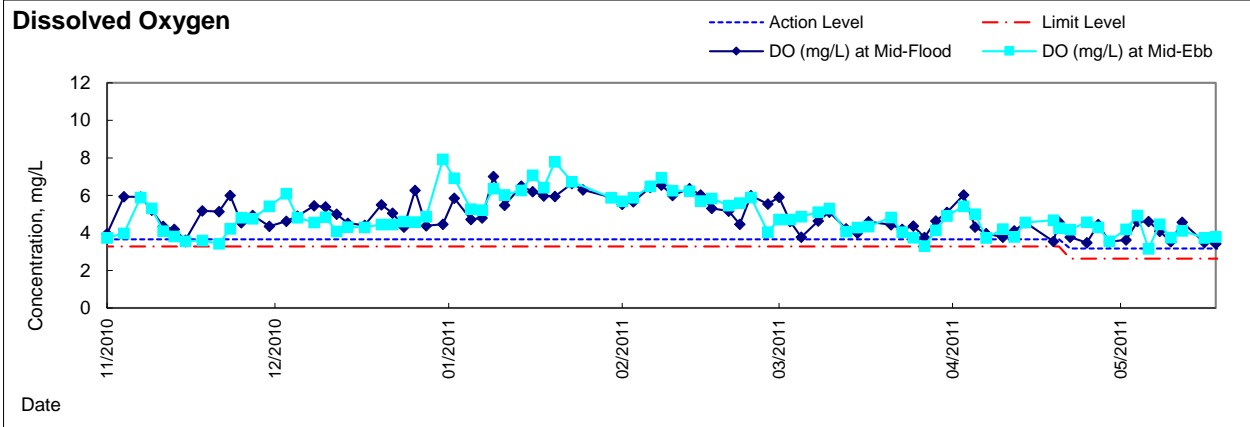


Graphic Presentation of Water Quality Result of C5w - Sun Hung Kai Centre



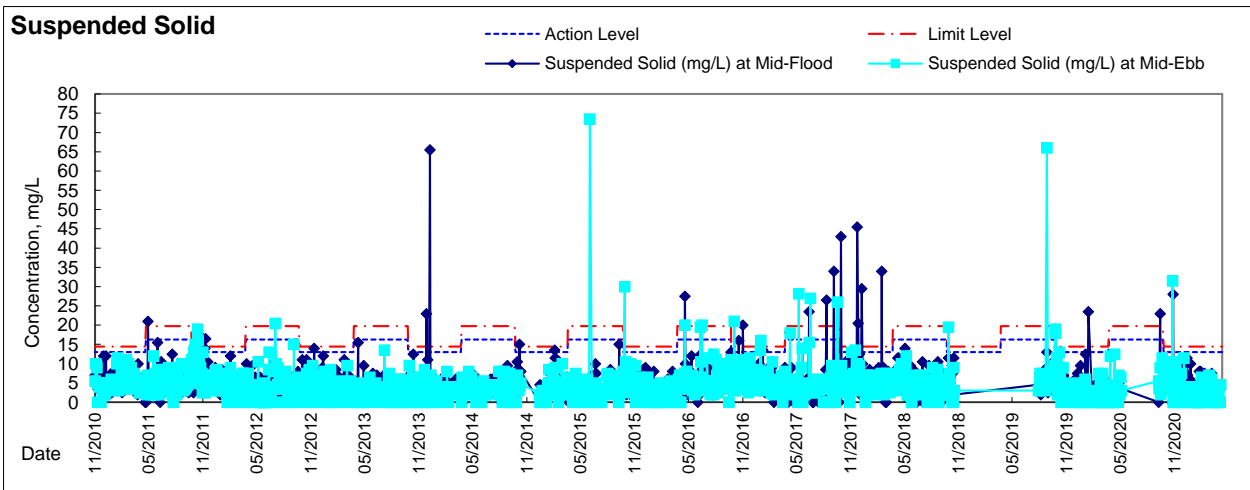
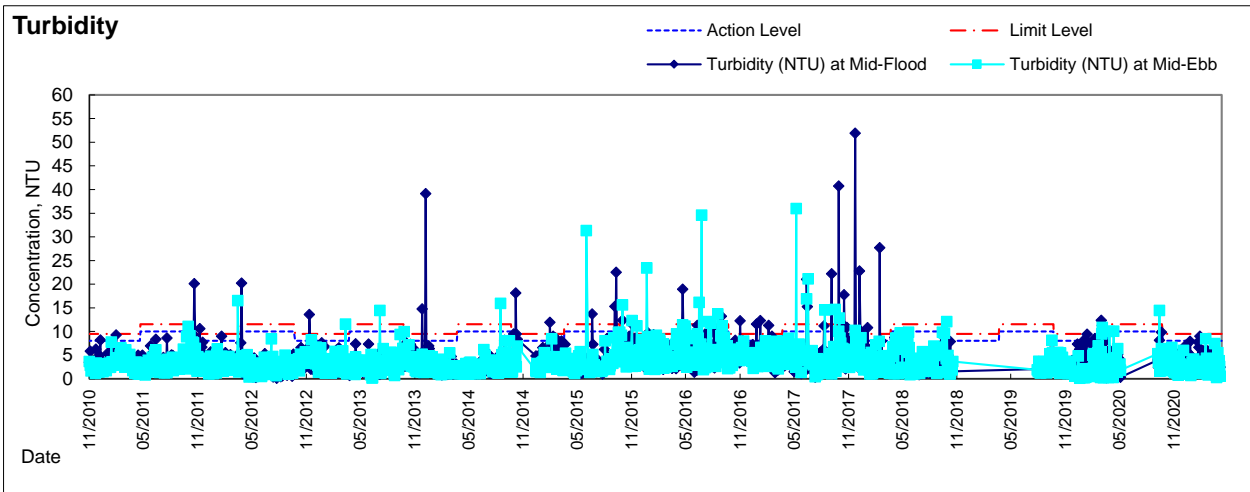
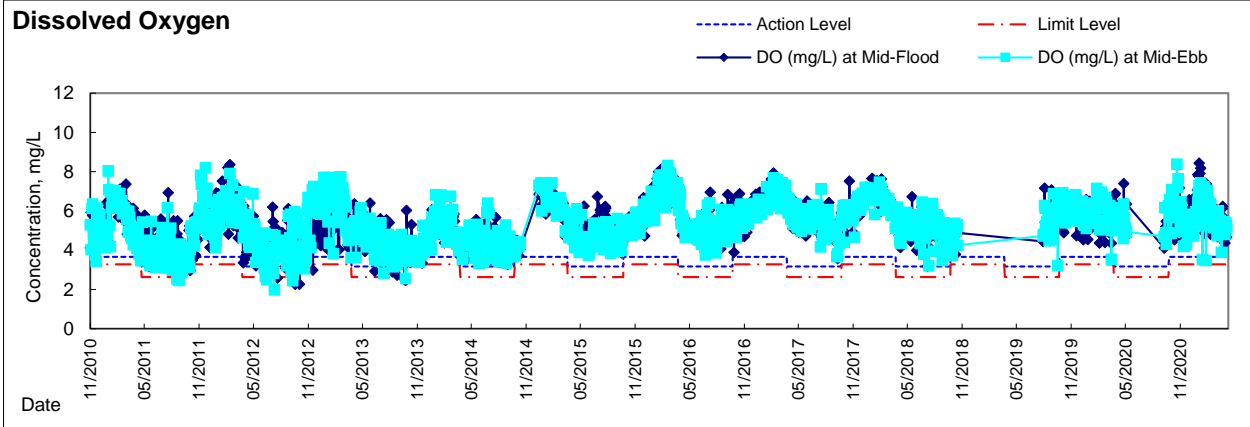


Graphic Presentation of Water Quality Result of C6 - Excelsior Hotel



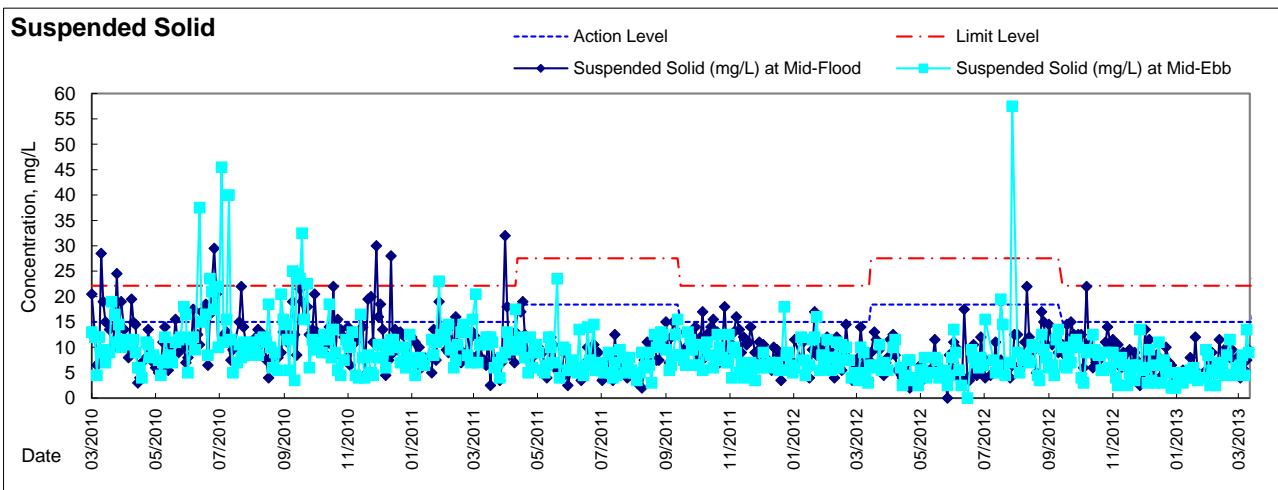
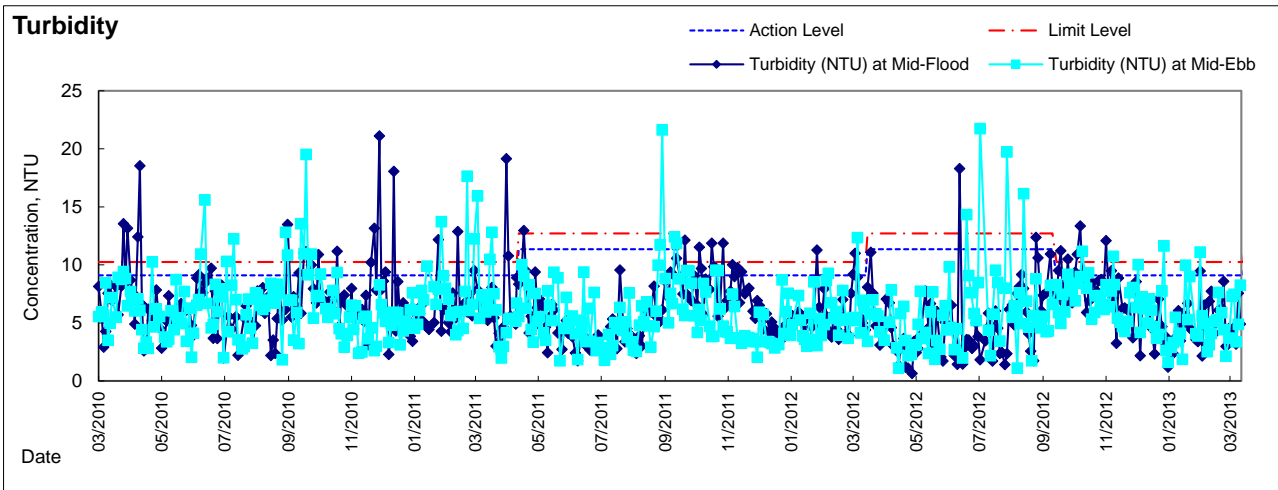
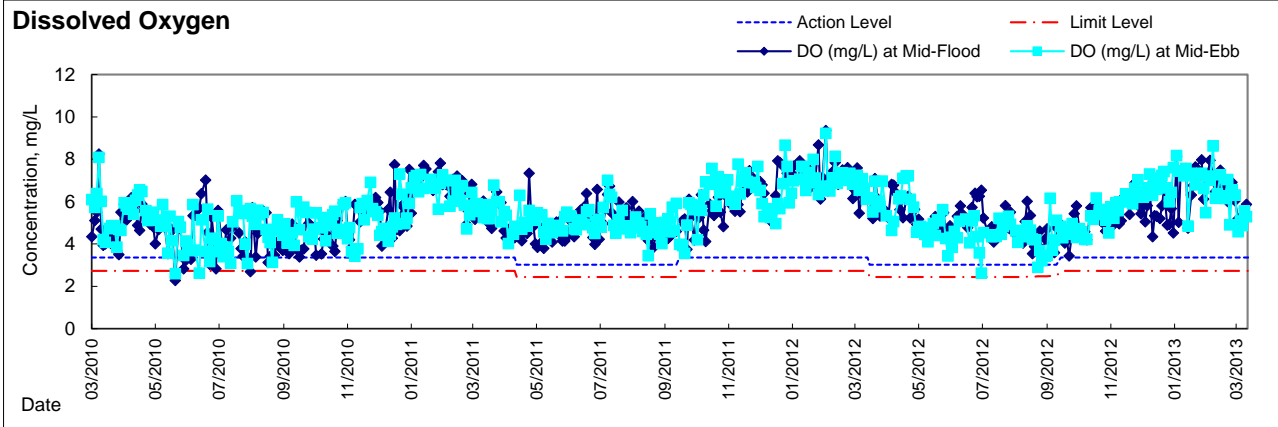


Graphic Presentation of Water Quality Result of C7 - Windsor House



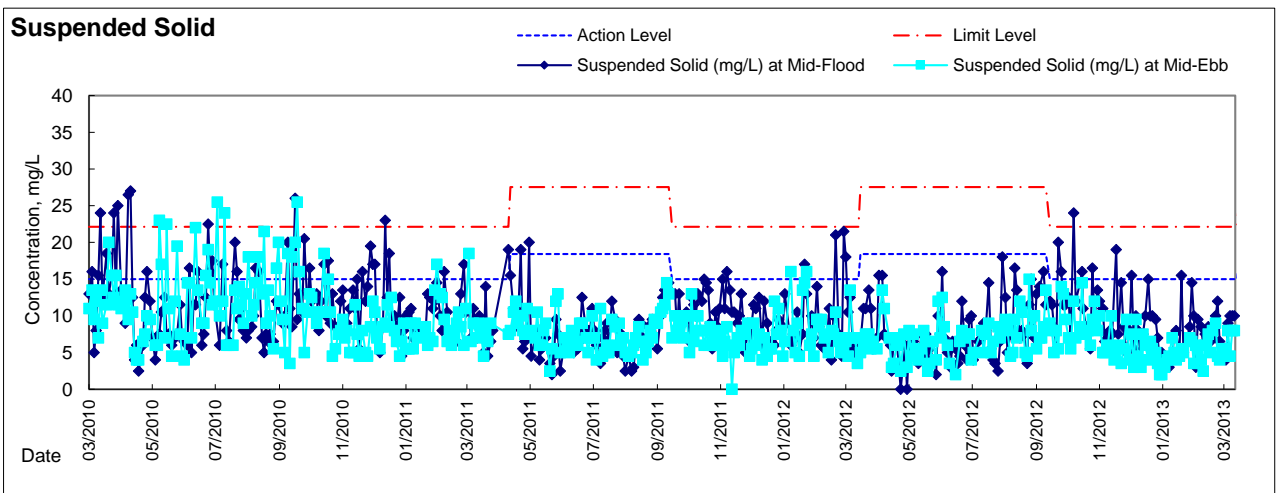
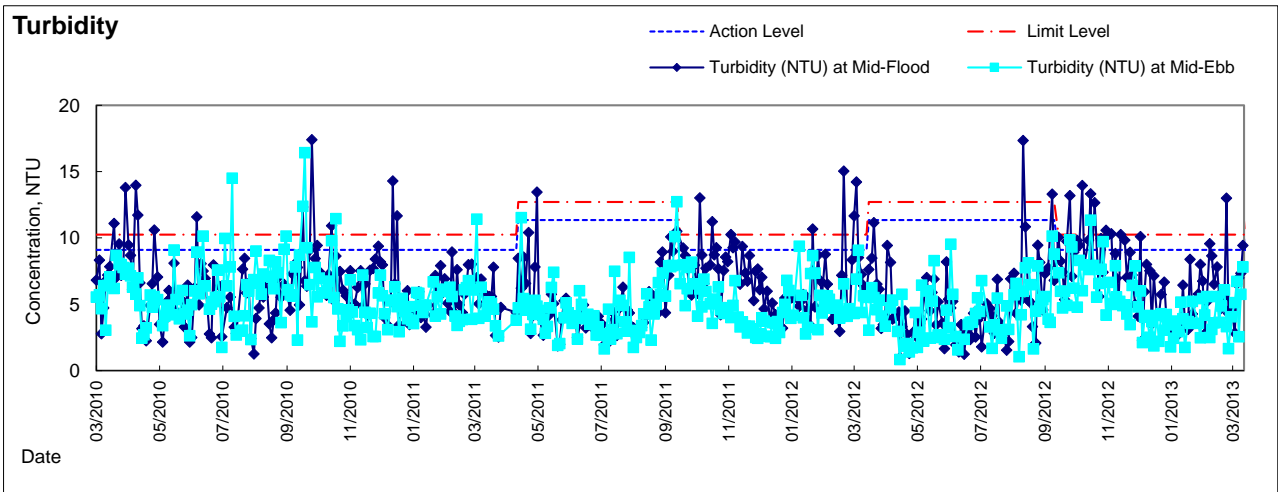
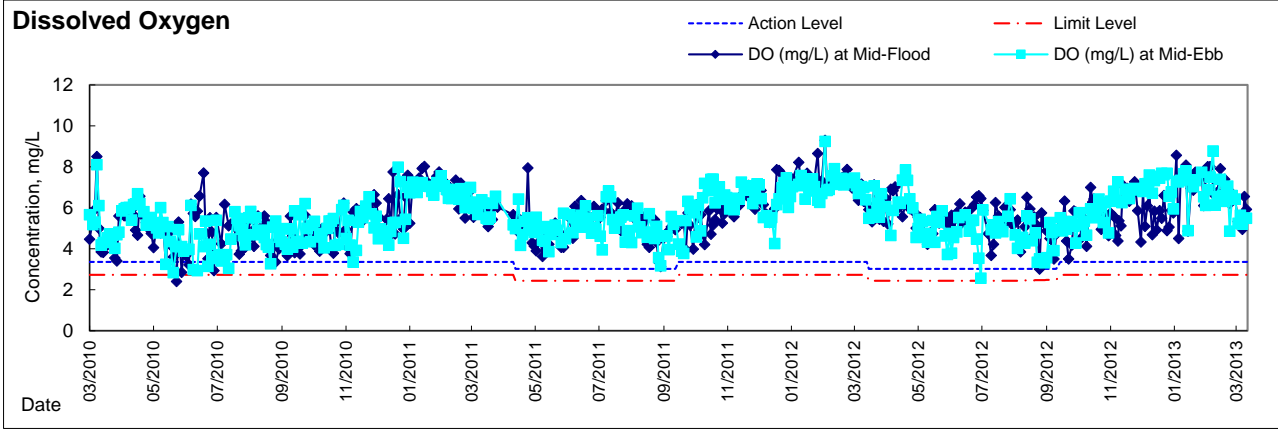


Graphic Presentation of Water Quality Result of C8 - City Garden



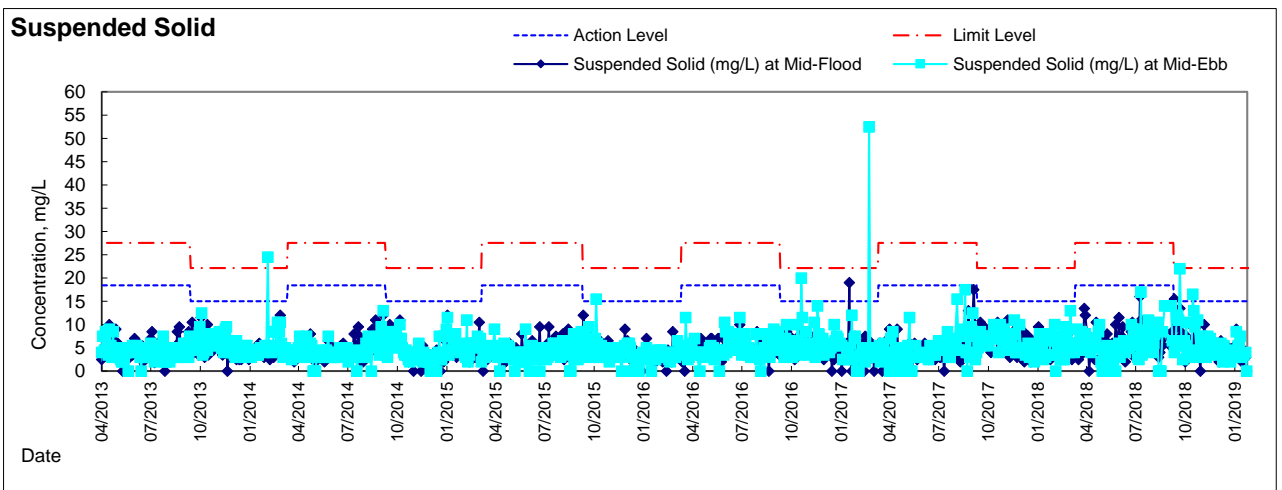
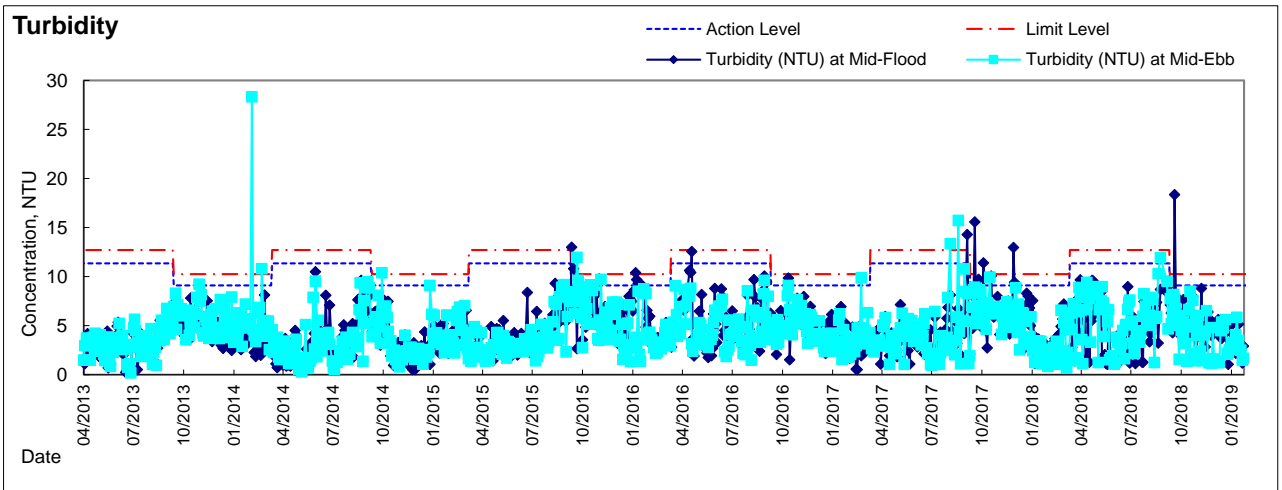
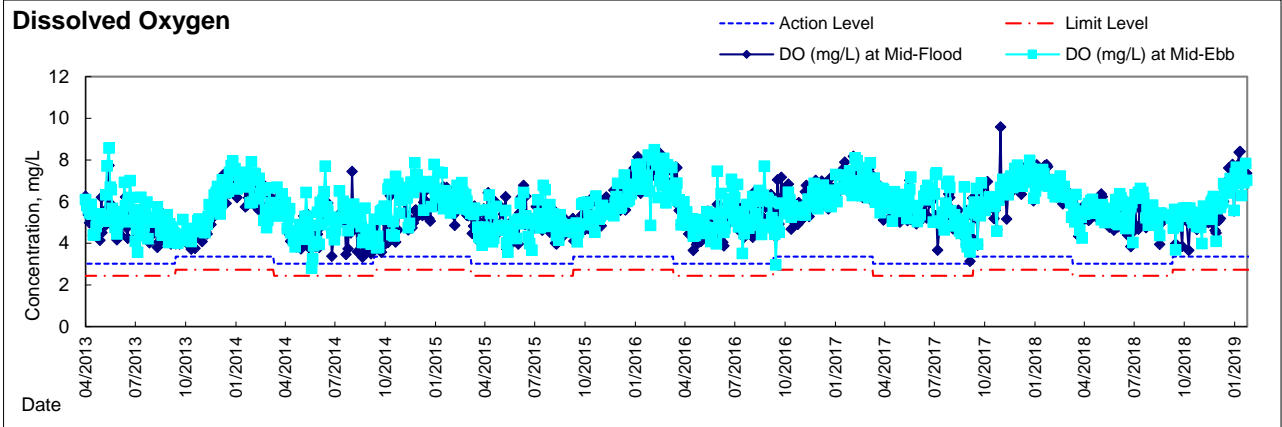


Graphic Presentation of Water Quality Result of C9 - Provident Garden



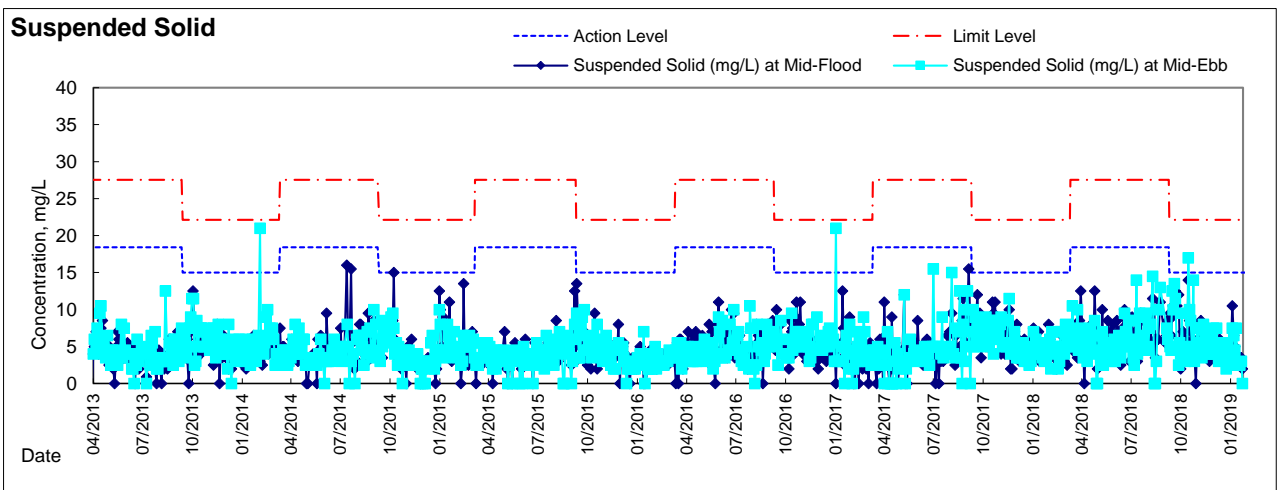
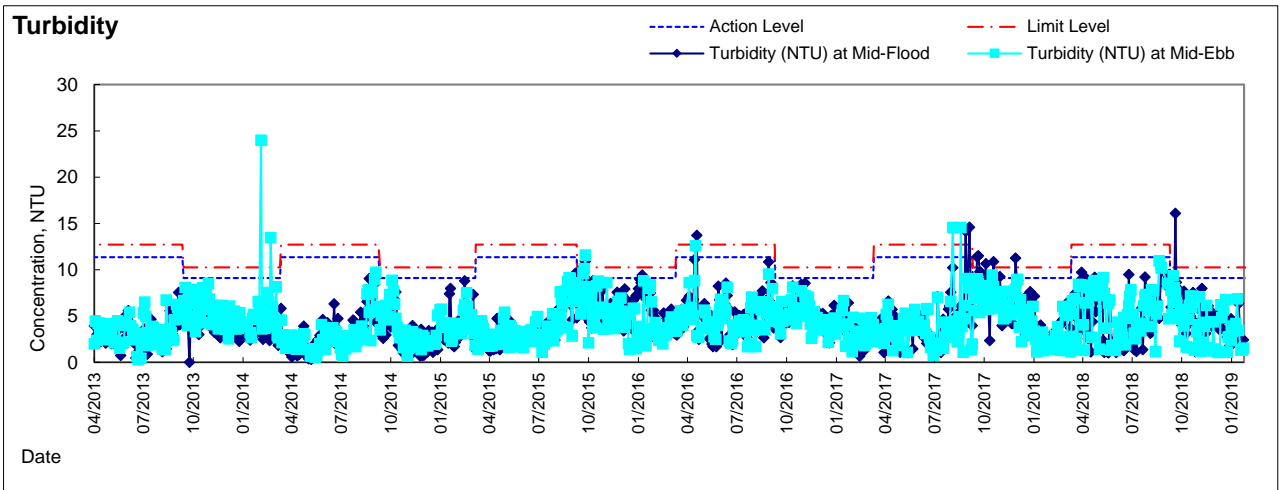
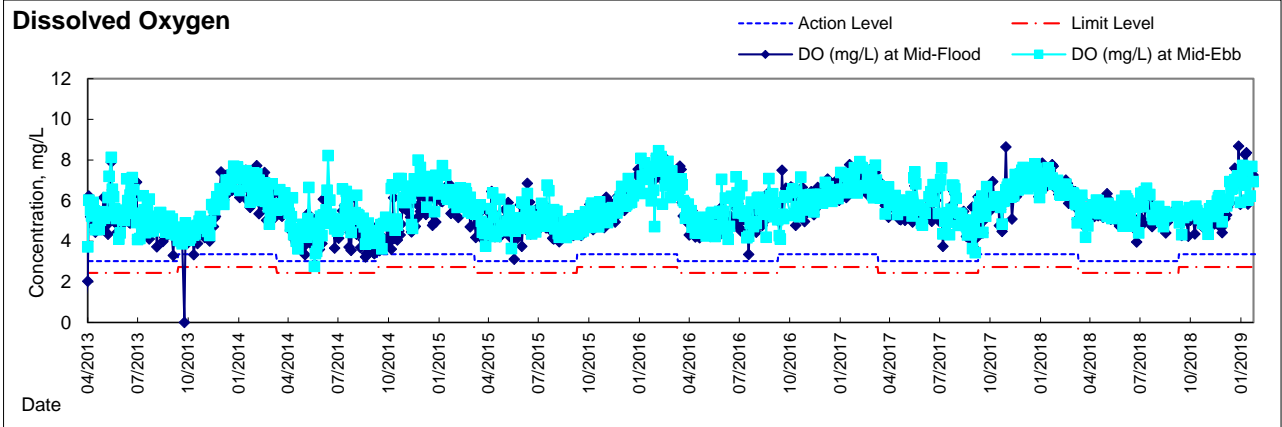


Graphic Presentation of Water Quality Result of P1 - HKCEC Phase I



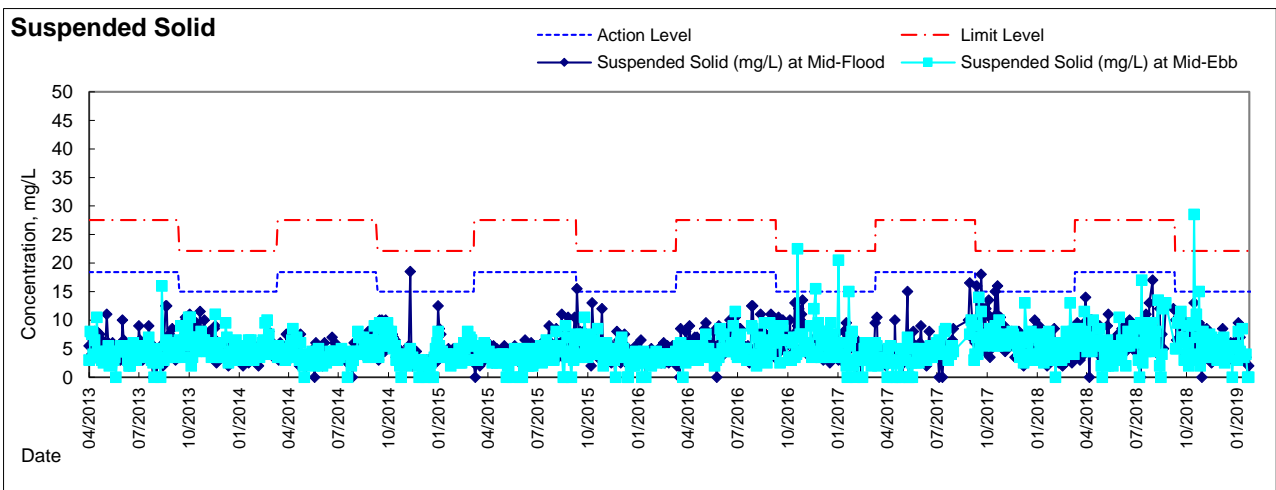
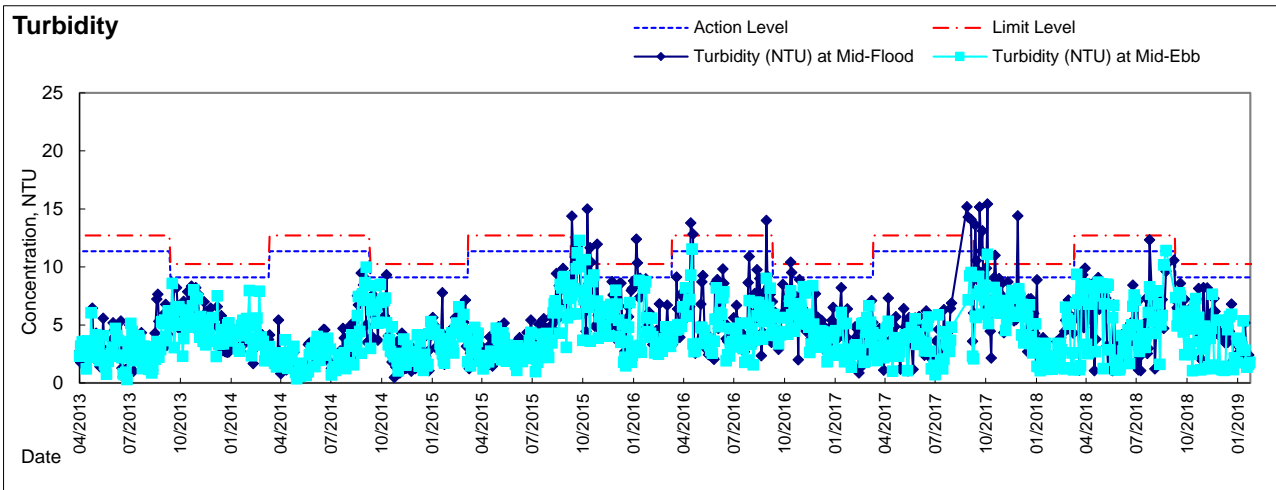
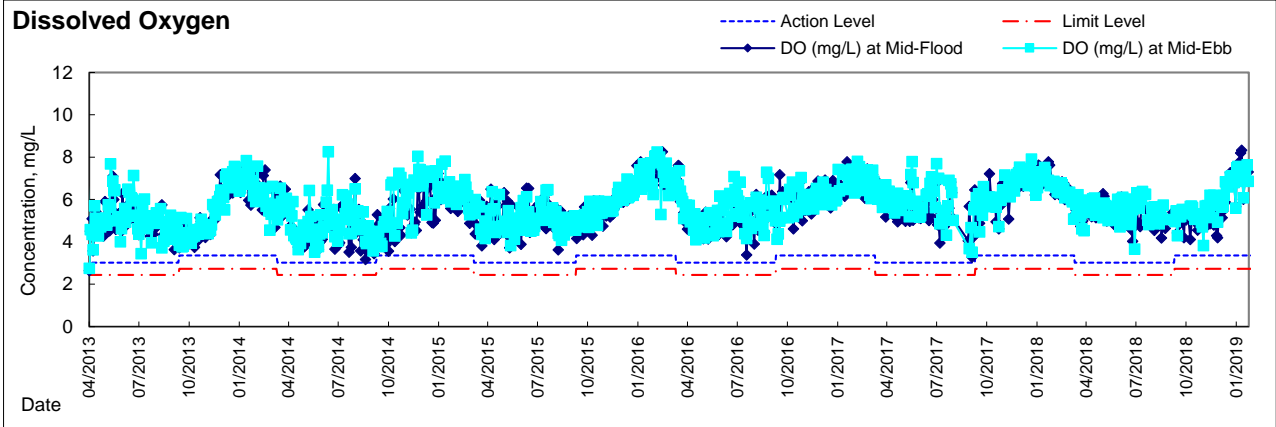


Graphic Presentation of Water Quality Result of P3 - APA



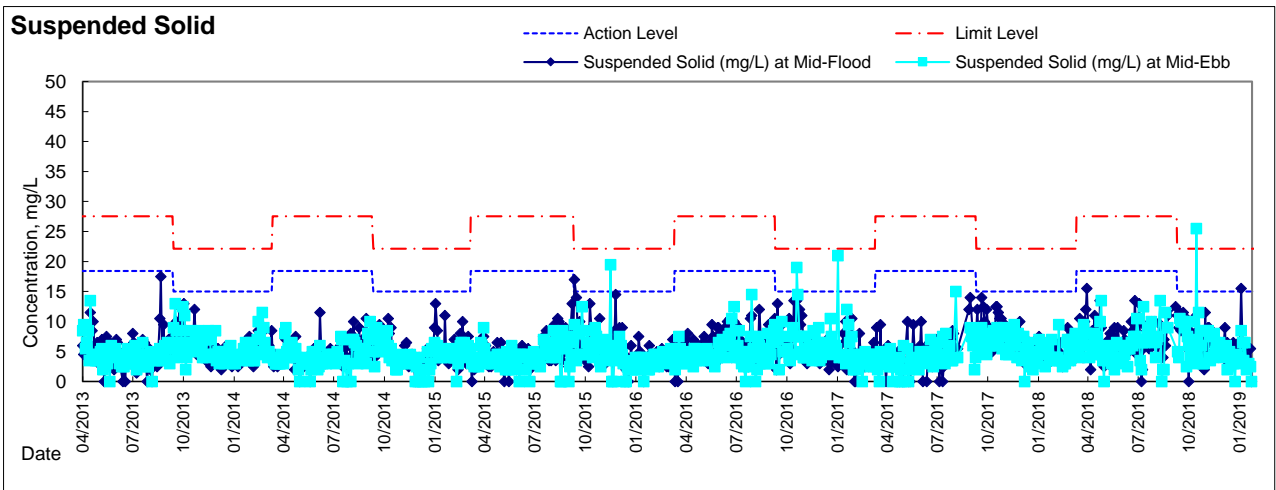
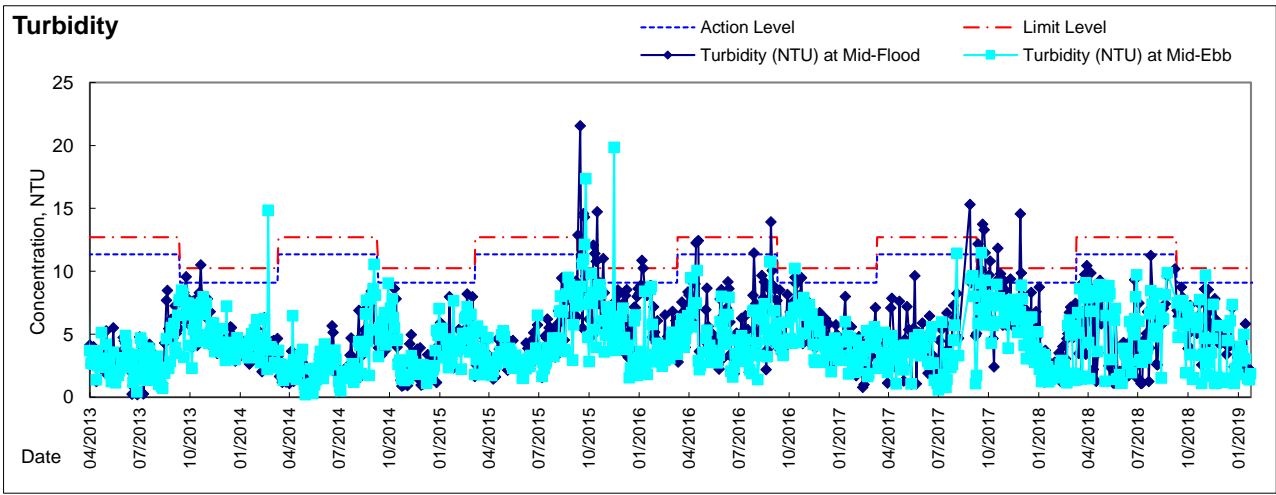
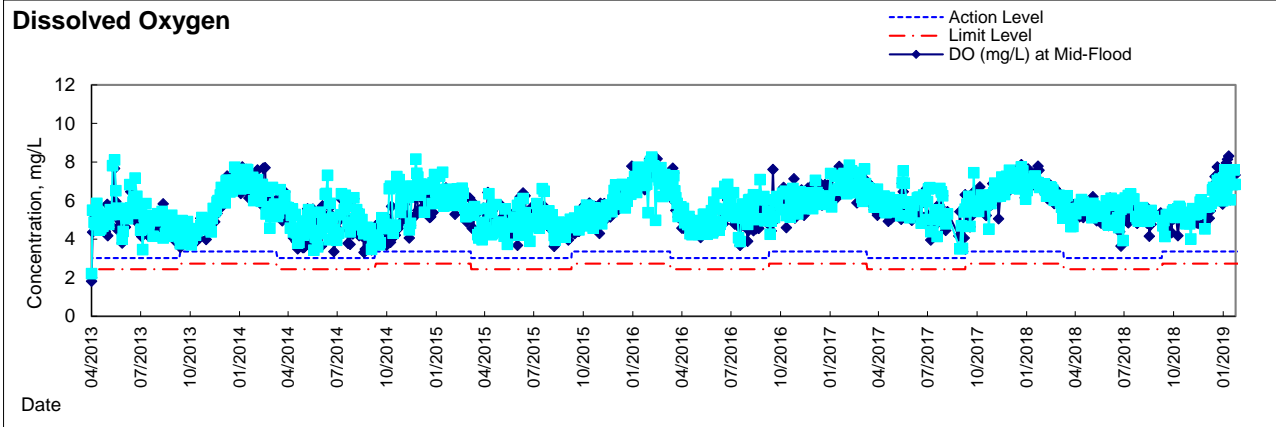


Graphic Presentation of Water Quality Result of P4 - SOC



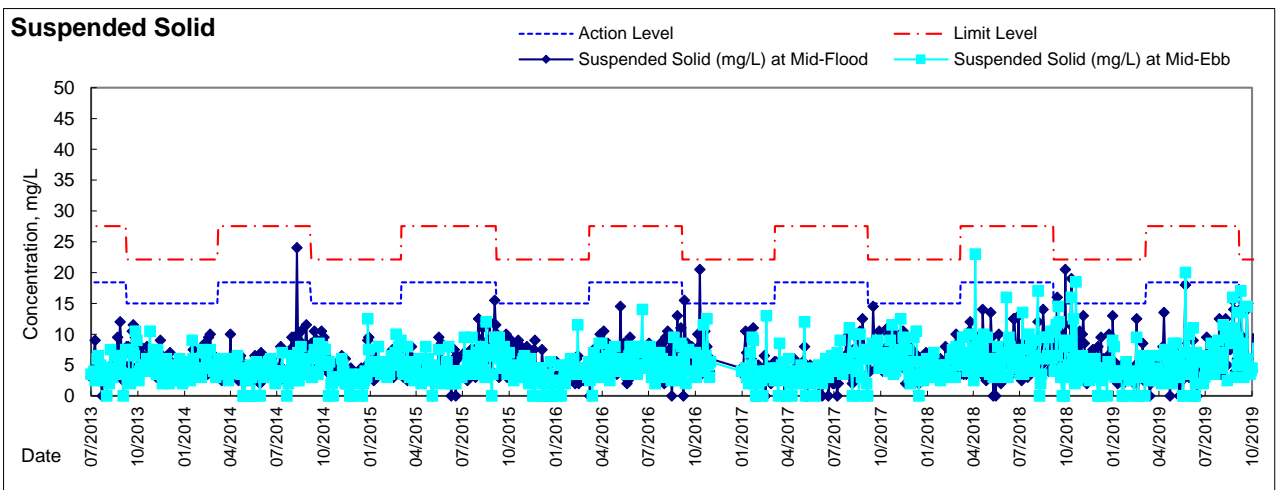
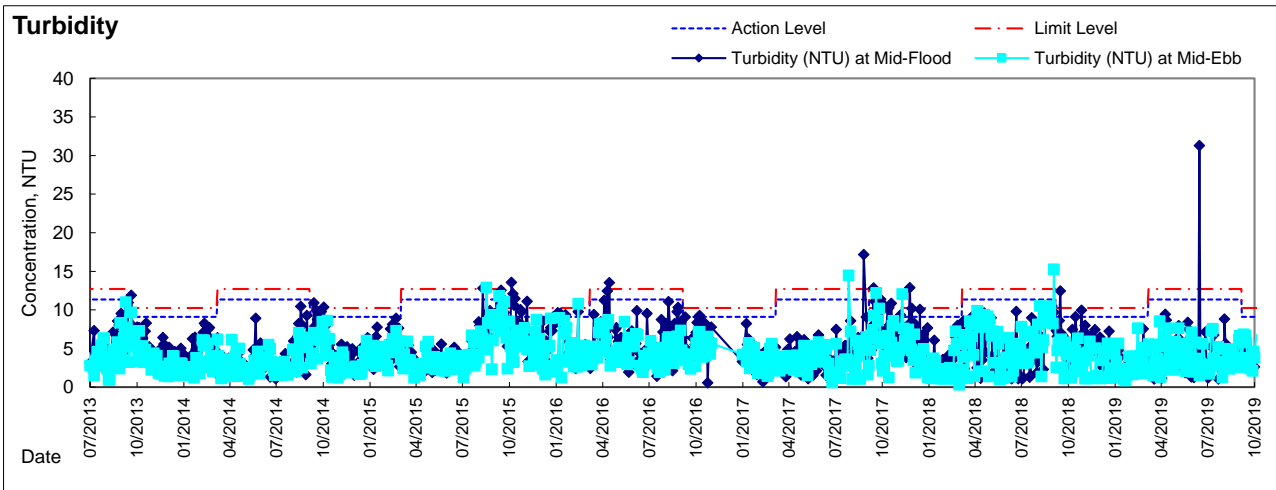
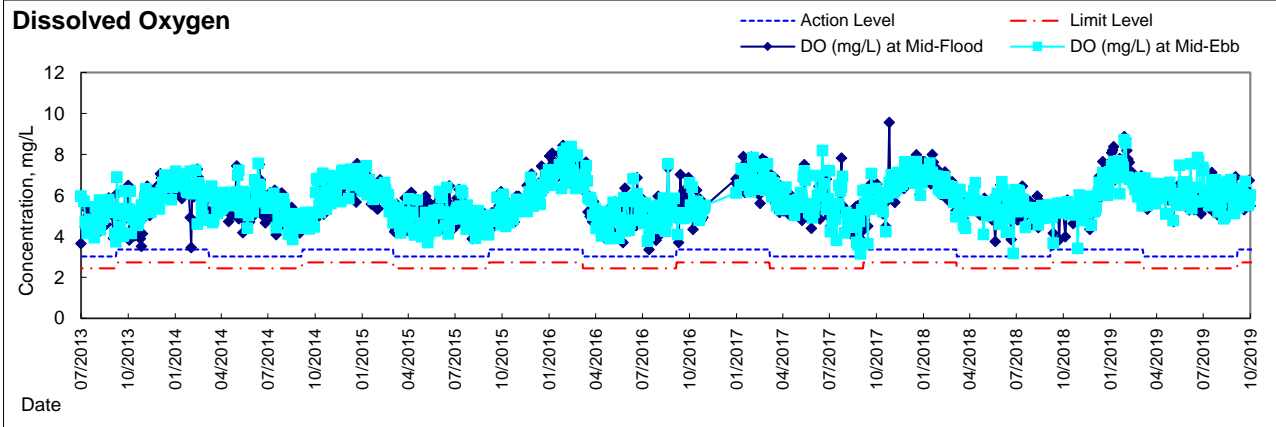


Graphic Presentation of Water Quality Result of P5 - WCT / RT / IT



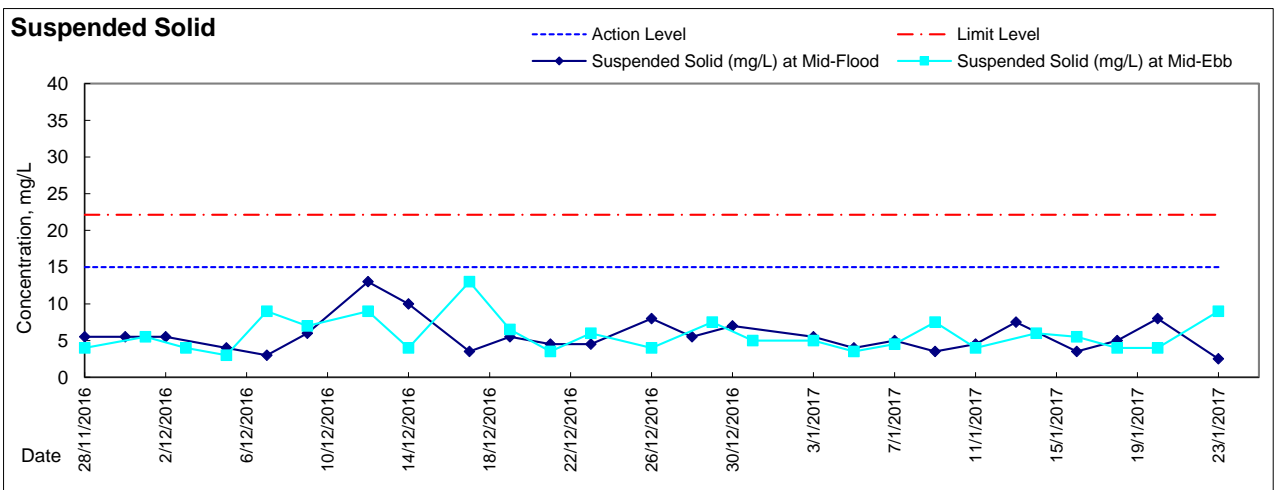
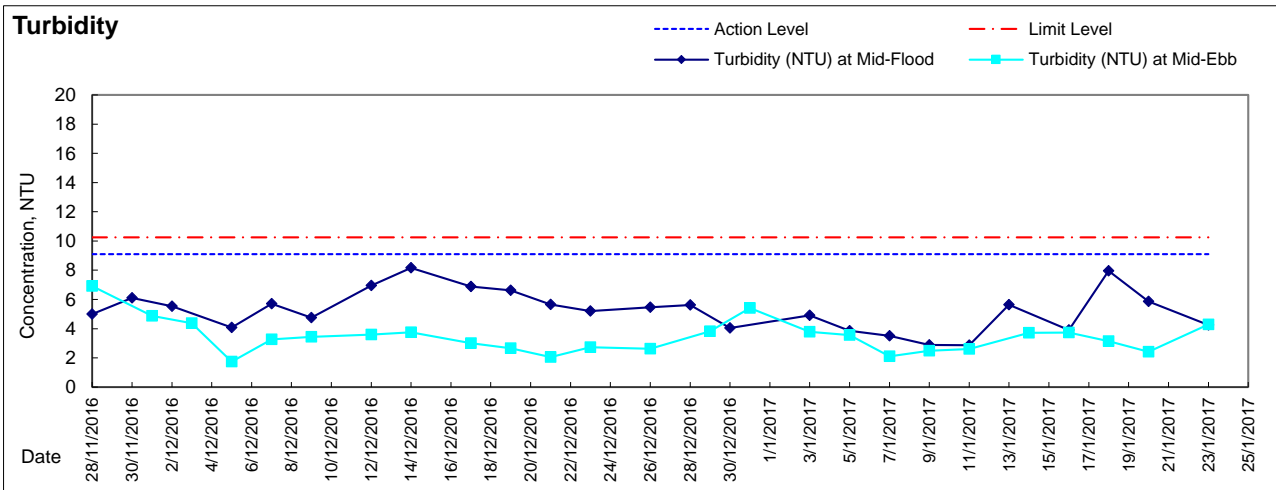
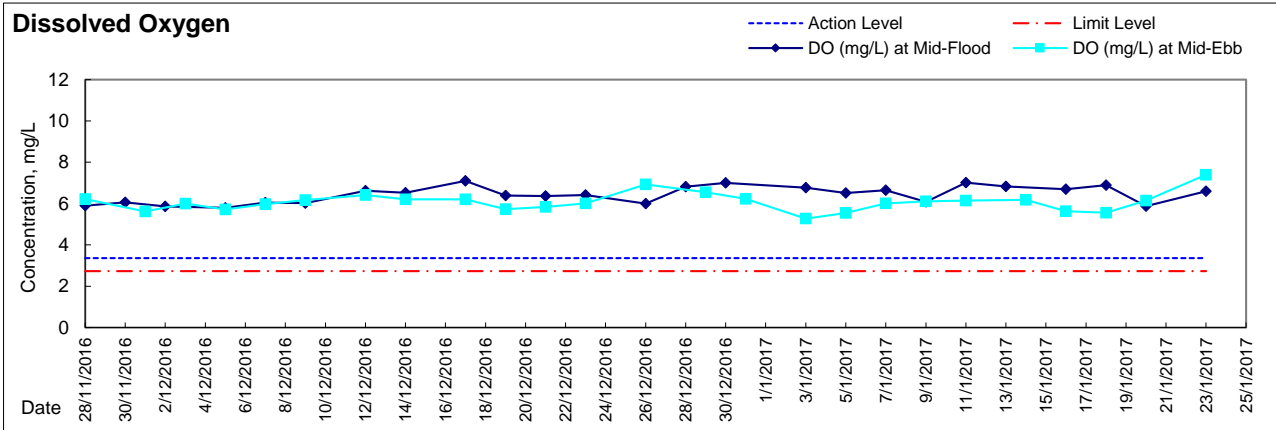


Graphic Presentation of Water Quality Result of RW21-P789 - GCE / CRB / SHK





Graphic Presentation of Water Quality Result of RW21-P789W - GCE / CRB / SHK



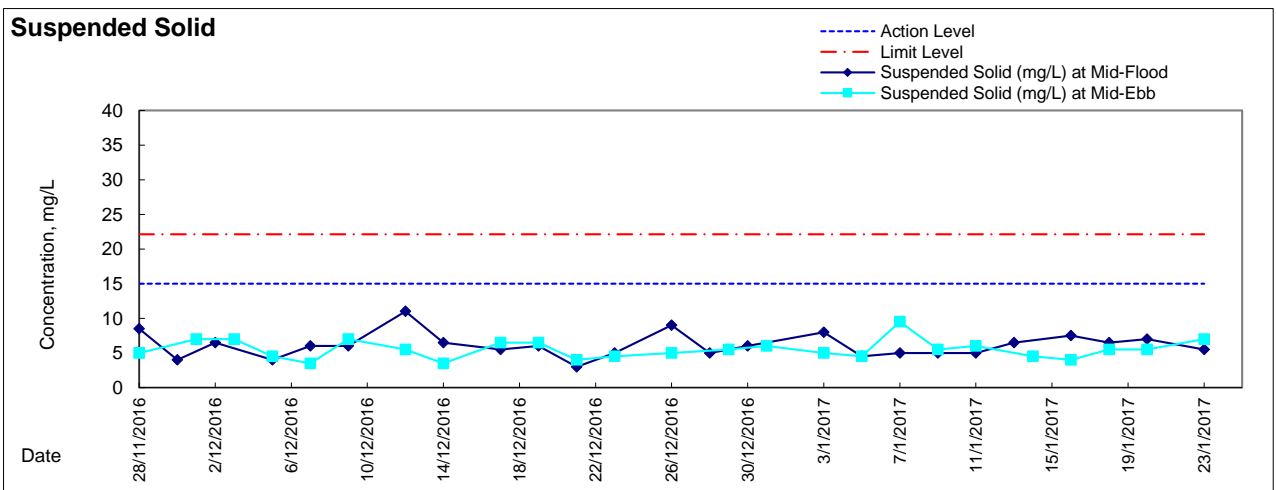
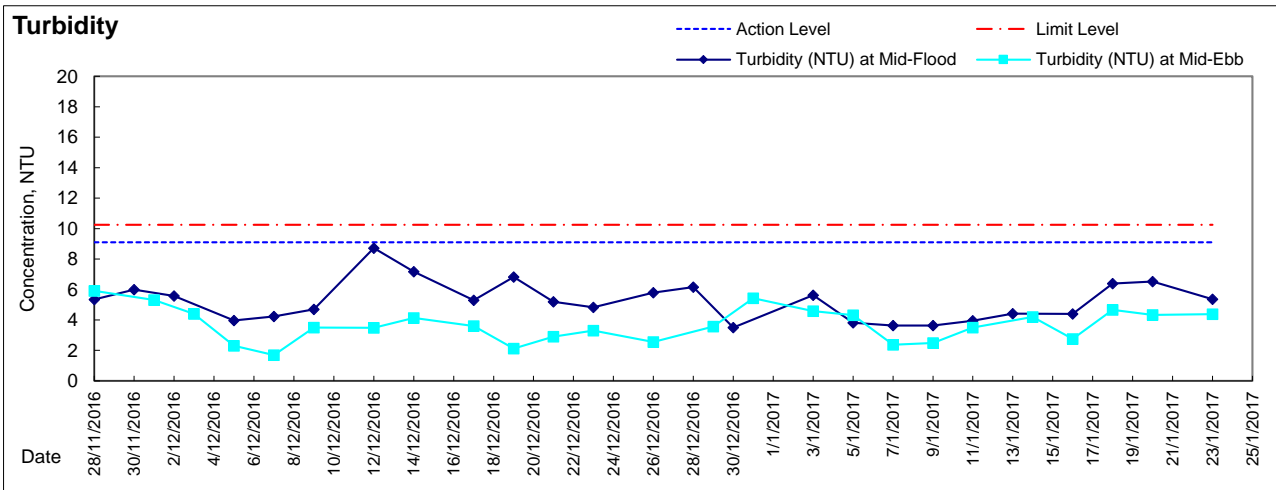
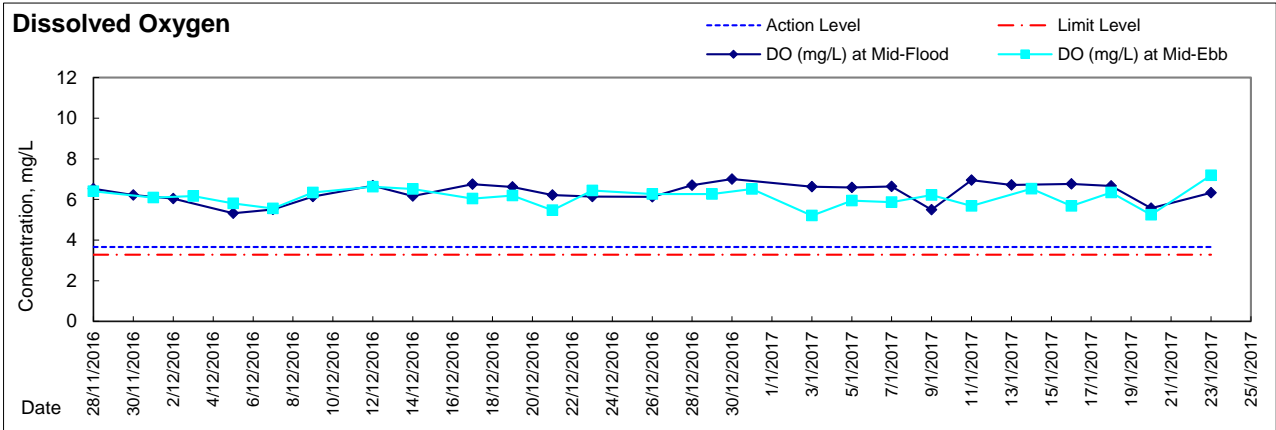
Remark

With respect to the removal of silt screen at WQM station RW21-P789 on 26 November 2016, the respective water quality monitoring at RW21-P789 was adjusted to RW21-P789E and RW21-P789W since 28 November 2016 ebb-tide.

With respect to the reinstatement of the silt screen system for Cooling Water Intakes P7, P8, P9 and WSD Water Intake RW21, the respective water quality monitoring was reverted to the previous monitoring location for Water Quality Monitoring Station RW21-P789 from water quality stations RW21-P789 East (RW21-P789E) and RW21-P789 West (RW21-P789W) from 25 January 2017 onwards.



Graphic Presentation of Water Quality Result of RW21-P789E - GCE / CRB / SHK



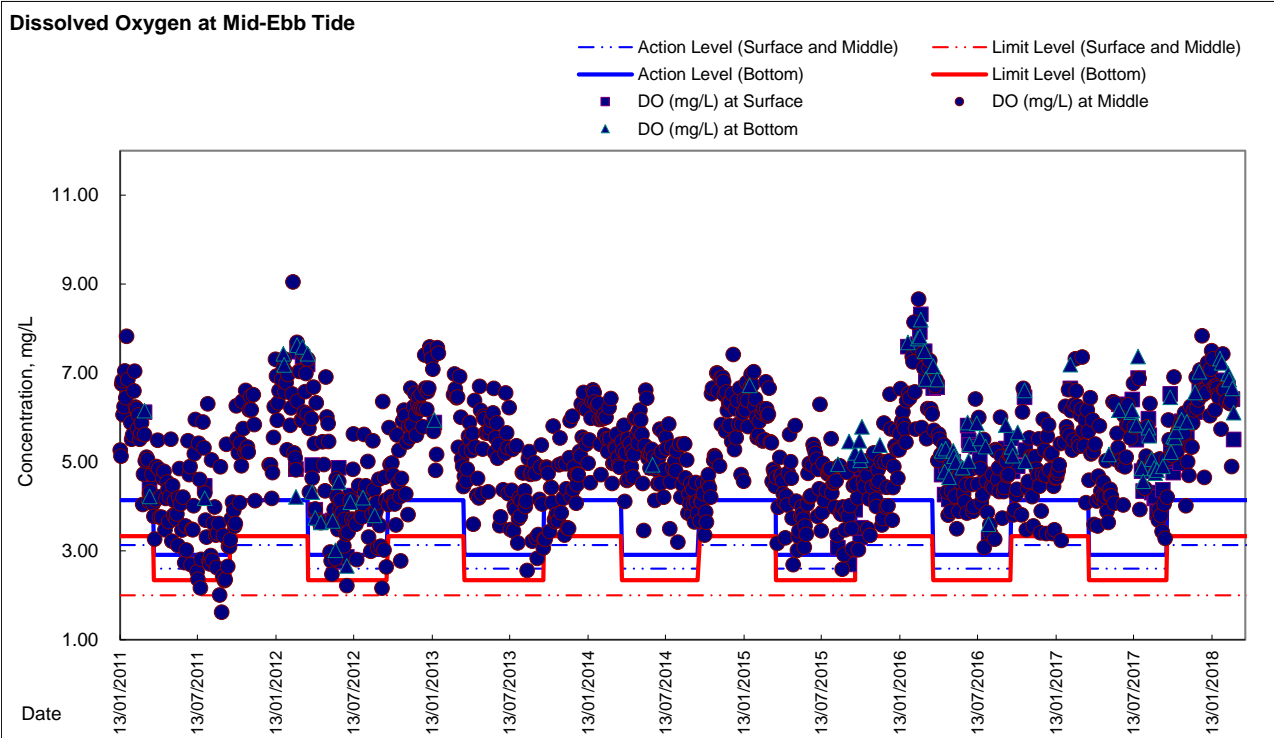
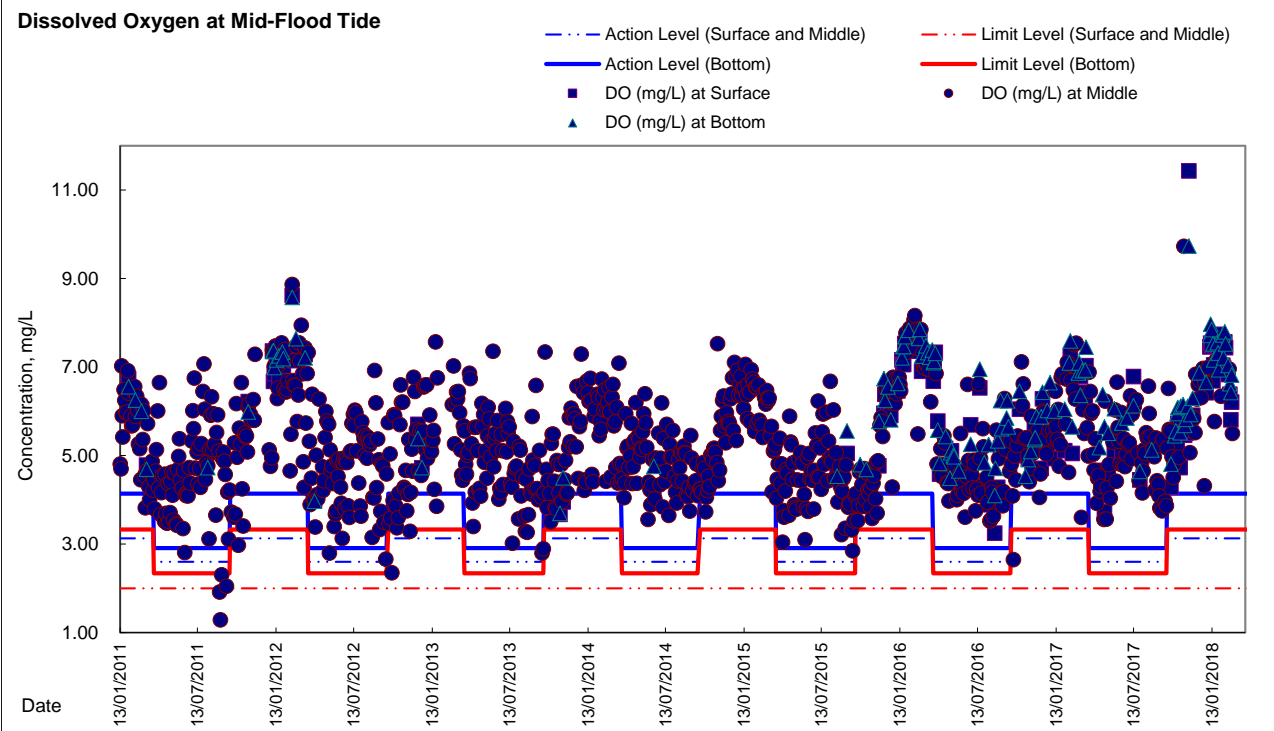
Remark:

With respect to the removal of silt screen at WQM station RW21-P789 on 26 November 2016, the respective water quality monitoring at RW21-P789 was adjusted to RW21-P789E and RW21-P789W since 28 November 2016 ebb-tide.

With respect to the reinstatement of the silt screen system for Cooling Water Intakes P7, P8, P9 and WSD Water Intake RW21, the respective water quality monitoring was reverted to the previous monitoring location for Water Quality Monitoring Station RW21-P789 from water quality stations RW21-P789 East (RW21-P789E) and RW21-P789 West (RW21-P789W) from 25 January 2017 onwards.

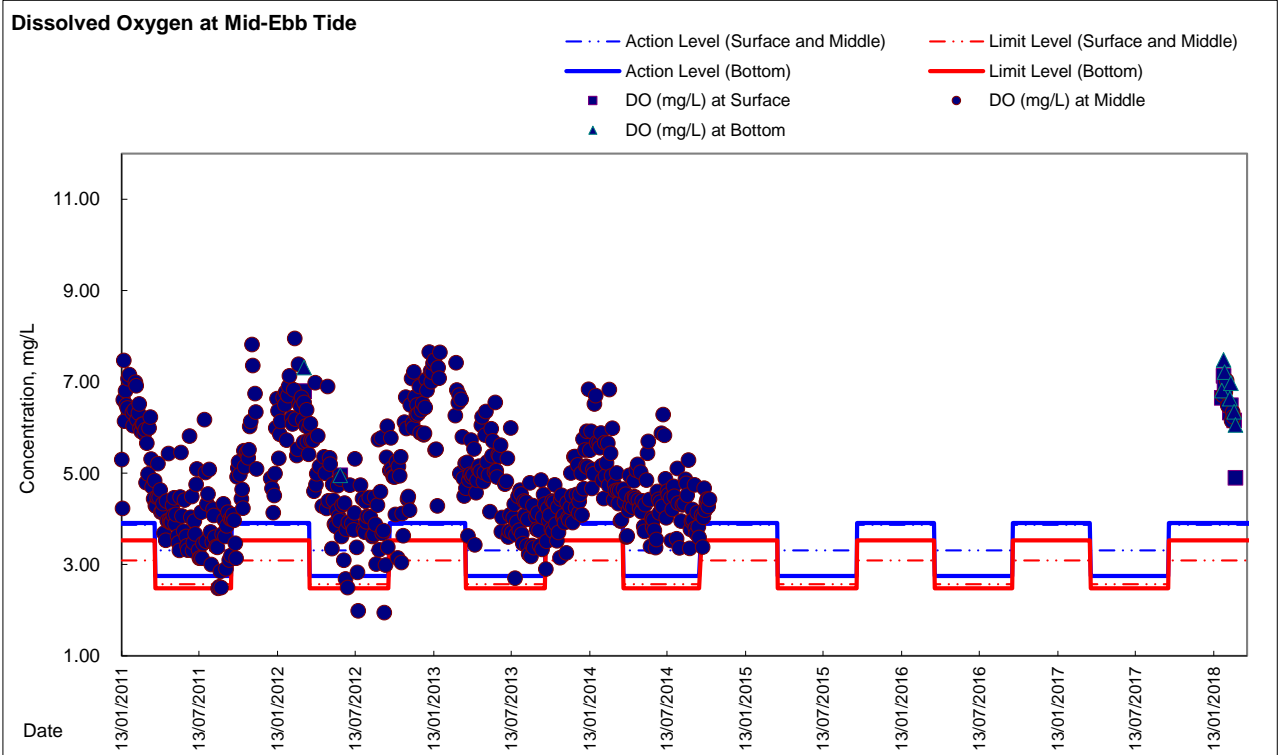
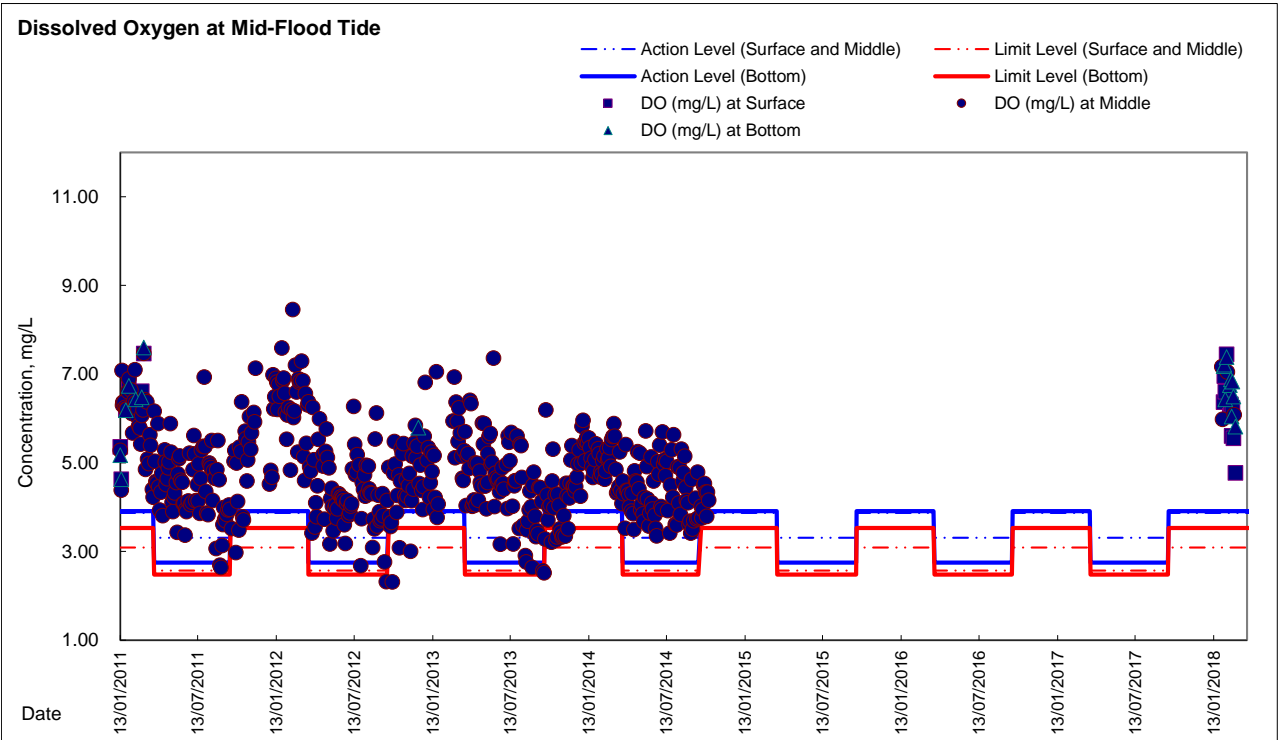


Graphic Presentation of Enhanced Water Monitoring Results (DO) at C6 - Excelsior Hotel



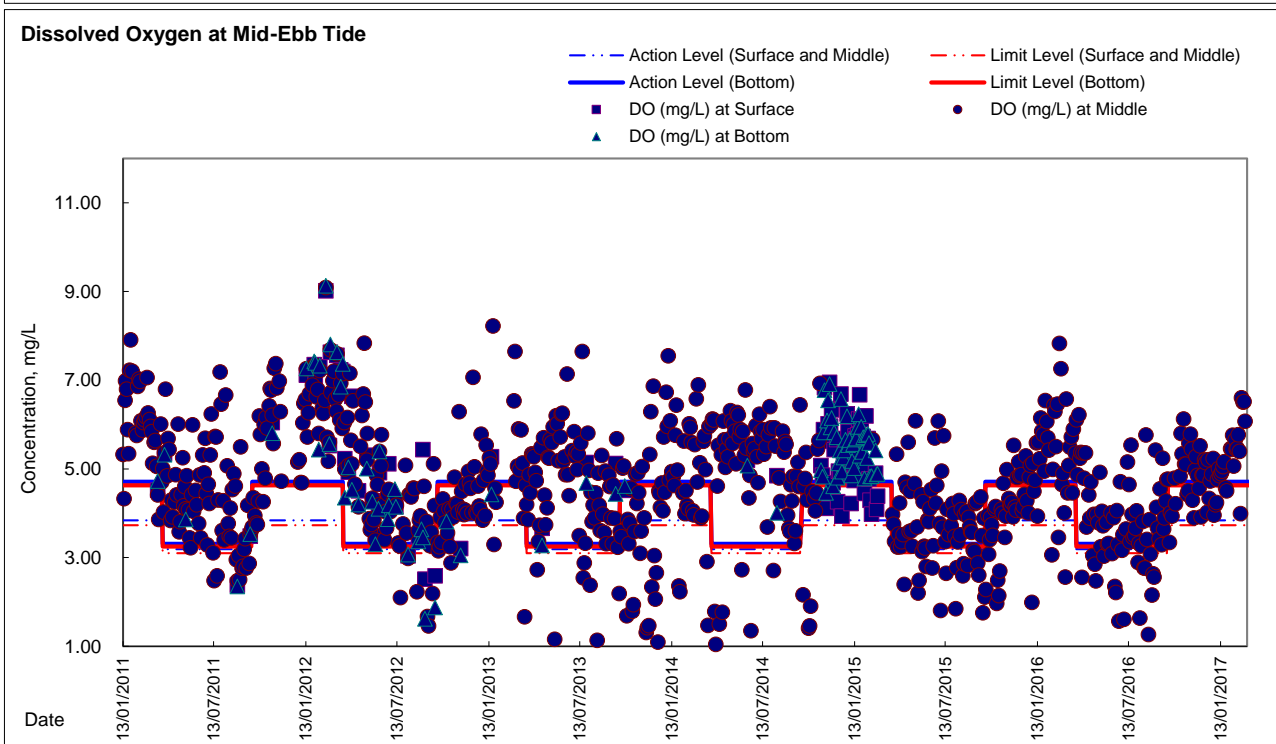
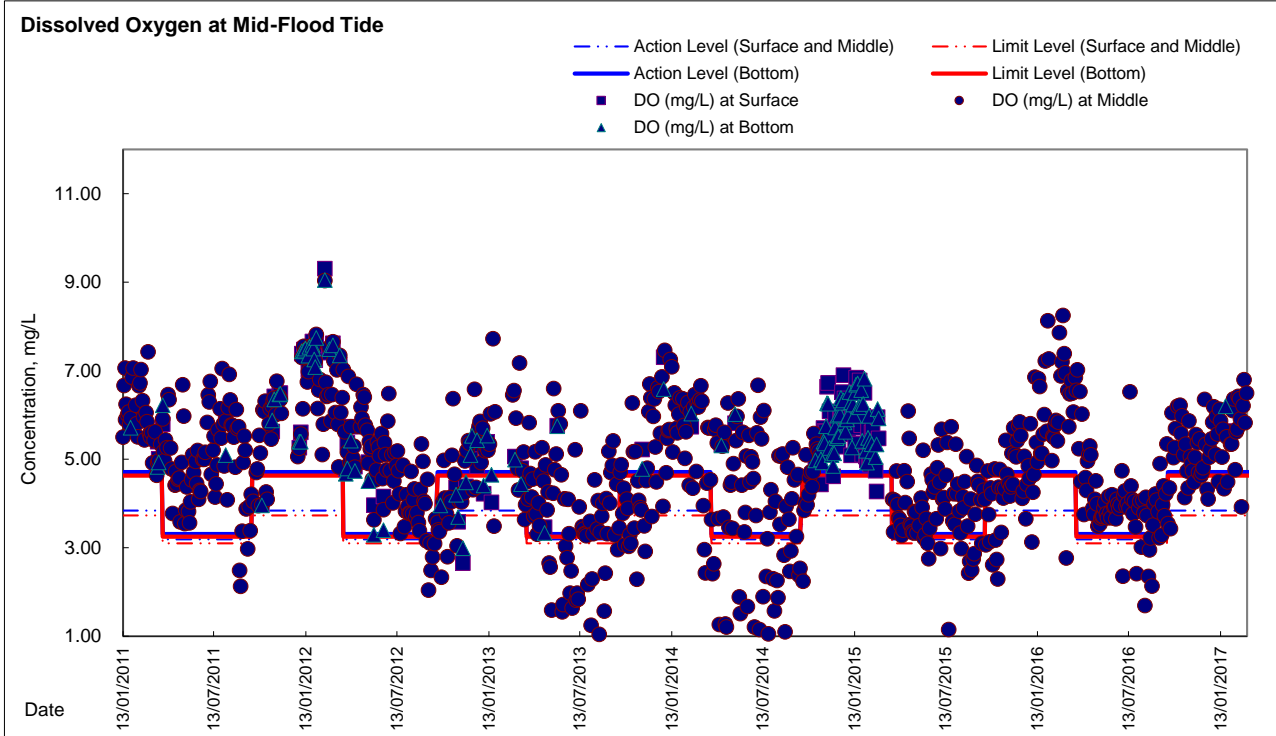


Graphic Presentation of Enhanced Water Monitoring Results (DO) at C7 - Windsor House





Graphic Presentation of Enhanced Water Monitoring Results (DO) at Ex-WPCWA SW - South-western corners of ex-Public Cargo Works Area





Graphic Presentation of Enhanced Water Monitoring Results (DO) at Ex-WPCWA SE - South-eastern corners of ex-Public Cargo Works Area

